



Graphics Card

Software Reference

E1729
First Edition
2005

Copyright© 2005 ASUSTeK COMPUTER INC. All Rights Reserved.

No part of this manual, including the products and software described in it, may be reproduced, transmitted, transcribed, stored in a retrieval system, or translated into any language in any form or by any means, except documentation kept by the purchaser for backup purposes, without the express written permission of ASUSTeK COMPUTER INC. (“ASUS”).

Product warranty or service will not be extended if: (1) the product is repaired, modified or altered, unless such repair, modification or alteration is authorized in writing by ASUS; or (2) the serial number of the product is defaced or missing.

ASUS PROVIDES THIS MANUAL “AS IS” WITHOUT WARRANTY OF ANY KIND, EITHER EXPRESS OR IMPLIED, INCLUDING BUT NOT LIMITED TO THE IMPLIED WARRANTIES OR CONDITIONS OF MERCHANTABILITY OR FITNESS FOR A PARTICULAR PURPOSE. IN NO EVENT SHALL ASUS, ITS DIRECTORS, OFFICERS, EMPLOYEES OR AGENTS BE LIABLE FOR ANY INDIRECT, SPECIAL, INCIDENTAL, OR CONSEQUENTIAL DAMAGES (INCLUDING DAMAGES FOR LOSS OF PROFITS, LOSS OF BUSINESS, LOSS OF USE OR DATA, INTERRUPTION OF BUSINESS AND THE LIKE), EVEN IF ASUS HAS BEEN ADVISED OF THE POSSIBILITY OF SUCH DAMAGES ARISING FROM ANY DEFECT OR ERROR IN THIS MANUAL OR PRODUCT.

SPECIFICATIONS AND INFORMATION CONTAINED IN THIS MANUAL ARE FURNISHED FOR INFORMATIONAL USE ONLY, AND ARE SUBJECT TO CHANGE AT ANY TIME WITHOUT NOTICE, AND SHOULD NOT BE CONSTRUED AS A COMMITMENT BY ASUS. ASUS ASSUMES NO RESPONSIBILITY OR LIABILITY FOR ANY ERRORS OR INACCURACIES THAT MAY APPEAR IN THIS MANUAL, INCLUDING THE PRODUCTS AND SOFTWARE DESCRIBED IN IT.

Products and corporate names appearing in this manual are used only for identification or explanation and to the owner’s benefit, without intent to infringe.

ASUS and the ASUS logo are registered trademarks of ASUSTeK COMPUTER INC.

Microsoft, Windows, Windows 98, windows 98SE, Windows ME, Windows 2000, Windows NT and Windows XP are registered trademarks of Microsoft Corporation. Intel is a registered trademark of Intel Corporation. NVIDIA is a registered trademark of NVIDIA Corporation. SiS is a registered trademark of Silicon Integrated Systems Corporation. NVIDIA is a registered trademark of NVIDIA Corporation. ALi is a registered trademark of ALi Corporation. VIA is a trademark of VIA Technologies, Inc. All other company and product names may be trademarks or registered trademarks of the respective owners with which they are associated.

Contents

| | |
|--------------------------------------------|----|
| Notices | iv |
| Safety information | v |
| About this guide | vi |
| 1. ASUS GameFace Messenger | 1 |
| 1.1 Introduction | 1 |
| 1.2 Getting Started | 1 |
| 1.3 Contacts | 7 |
| 1.4 Tools | 9 |
| 1.5 Settings | 11 |
| 2. ASUS Splendid | 16 |
| 2.1 Introduction | 16 |
| 2.2 Launching ASUS Splendid | 16 |
| 3. ASUS OnScreenDisplay (OSD) | 19 |
| 3.1 Introduction | 19 |
| 3.2 Enabling ASUS OSD | 19 |
| 4. ASUS GameLiveShow | 20 |
| 4.1 Introduction | 20 |
| 4.2 Getting Started | 20 |
| 5. ASUS SmartDoctor | 27 |
| 5.1 Functions | 27 |
| 5.2 Launching ASUS SmartDoctor | 27 |
| 6. ASUS SmartDoctor | 28 |
| 6.1 Voltage status | 28 |
| 6.2 Temperature status | 28 |
| 6.3 Fan speed status | 29 |
| 6.4 Engine and memory clock settings | 29 |
| 6.5 Advanced setup features | 30 |
| 7. ASUS VideoSecurity Online | 35 |
| 7.1 Launching ASUS VideoSecurity | 35 |
| 7.2 Setup | 36 |
| 7.3 Video Source | 49 |
| 7.4 Set detect region | 50 |

Notices

Federal Communications Commission Statement

This device complies with Part 15 of the FCC Rules. Operation is subject to the following two conditions:

- This device may not cause harmful interference, and
- This device must accept any interference received including interference that may cause undesired operation.

This equipment has been tested and found to comply with the limits for a Class B digital device, pursuant to Part 15 of the FCC Rules. These limits are designed to provide reasonable protection against harmful interference in a residential installation. This equipment generates, uses and can radiate radio frequency energy and, if not installed and used in accordance with manufacturer's instructions, may cause harmful interference to radio communications. However, there is no guarantee that interference will not occur in a particular installation. If this equipment does cause harmful interference to radio or television reception, which can be determined by turning the equipment off and on, the user is encouraged to try to correct the interference by one or more of the following measures:

- Reorient or relocate the receiving antenna.
- Increase the separation between the equipment and receiver.
- Connect the equipment to an outlet on a circuit different from that to which the receiver is connected.
- Consult the dealer or an experienced radio/TV technician for help.



The use of shielded cables for connection of the monitor to the graphics card is required to assure compliance with FCC regulations. Changes or modifications to this unit not expressly approved by the party responsible for compliance could void the user's authority to operate this equipment.

Canadian Department of Communication Statement

This digital apparatus does not exceed the Class B limits for radio noise emissions from digital apparatus set out in the Radio Interference Regulations of the Canadian Department of Communications.

This class B digital apparatus complies with Canadian ICES-003.

Safety information

Electrical safety

- When adding or removing devices to or from the system, ensure that the power cables for the devices are unplugged before the signal cables are connected. If possible, disconnect all power cables from the existing system before you add a device.
- Make sure that your power supply is set to the correct voltage in your area. If you are not sure about the voltage of the electrical outlet you are using, contact your local power company.
- If the power supply is broken, do not try to fix it by yourself. Contact a qualified service technician or your retailer.

Operation safety

- Before installing devices on your motherboard, carefully read all the manuals that came with the package.
- Before using the product, make sure all cables are correctly connected and the power cables are not damaged. If you detect any damage, contact your dealer immediately.
- To avoid short circuits, keep paper clips, screws, and staples away from connectors, slots, sockets and circuitry.
- Avoid dust, humidity, and temperature extremes. Do not place the product in any area where it may become wet.
- Place the product on a stable surface.
- If you encounter technical problems with the product, contact a qualified service technician or your retailer.

Macrovision Corporation Product Notice

This product incorporates copyright protection technology that is protected by method claims of certain U.S. patents and other intellectual property rights owned by Macrovision Corporation and other rights owners. Use of this copyright protection technology must be authorized by Macrovision Corporation, and is intended for home and other limited viewing uses only *unless otherwise authorized by Macrovision Corporation*. Reverse engineering or disassembly is prohibited.

About this guide

Conventions used in this guide

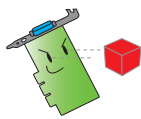
To make sure that you perform certain tasks properly, take note of the following symbols used throughout this manual.



WARNING: Information to prevent injury to yourself when trying to complete a task.



CAUTION: Information to prevent damage to the components when trying to complete a task.



IMPORTANT: Information that you **MUST** follow to complete a task.



NOTE: Tips and additional information to aid in completing a task.

Where to find more information

Refer to the following sources for additional information and for product and software updates.

1. **ASUS Websites**

The ASUS websites worldwide provide updated information on ASUS hardware and software products. The ASUS websites are listed in the ASUS Contact Information on the inside front cover of this installation guide.

2. **Optional Documentation**

Your product package may include optional documentation, such as warranty flyers, that may have been added by your dealer. These documents are not part of the standard package.

1. ASUS GameFace Messenger

1.1 Introduction

ASUS GameFace Messenger allows real-time text, audio, or video communication with other GameFace Messenger users. This utility enables point-to-point video conferencing functions and online gaming to take place at the same time.

1.2 Getting Started

1.2.1 Launching ASUS GameFace Messenger

To launch ASUS GameFace Messenger:

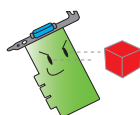
Click the **Start** button. Select **GameFace Messenger** from your Windows All Programs menu.

-or-

Double-click the **GameFace Messenger** icon  on your desktop.

1.2.2 Register a new account

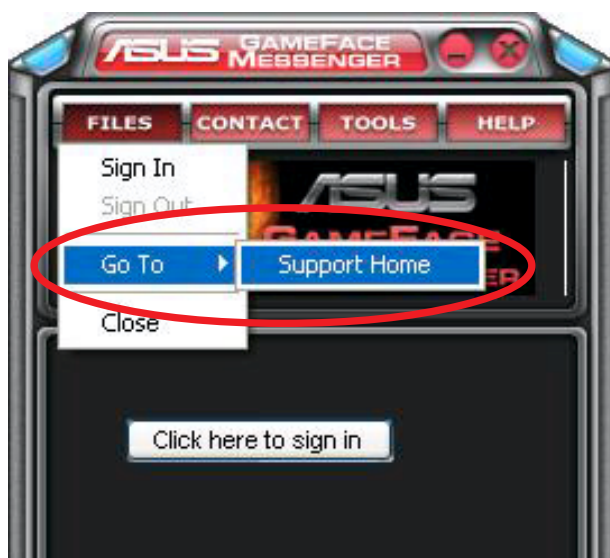
If you don't have a GameFace Messenger account, follow the given steps to create one.



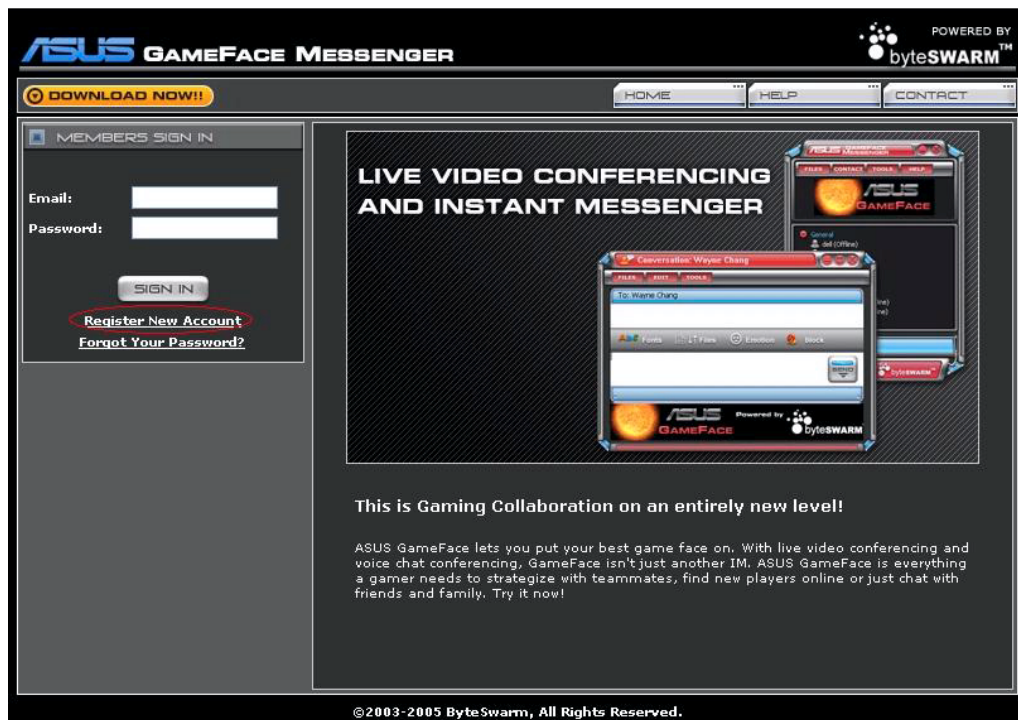
Connect to the Internet before you register a new account.

To register a new account:

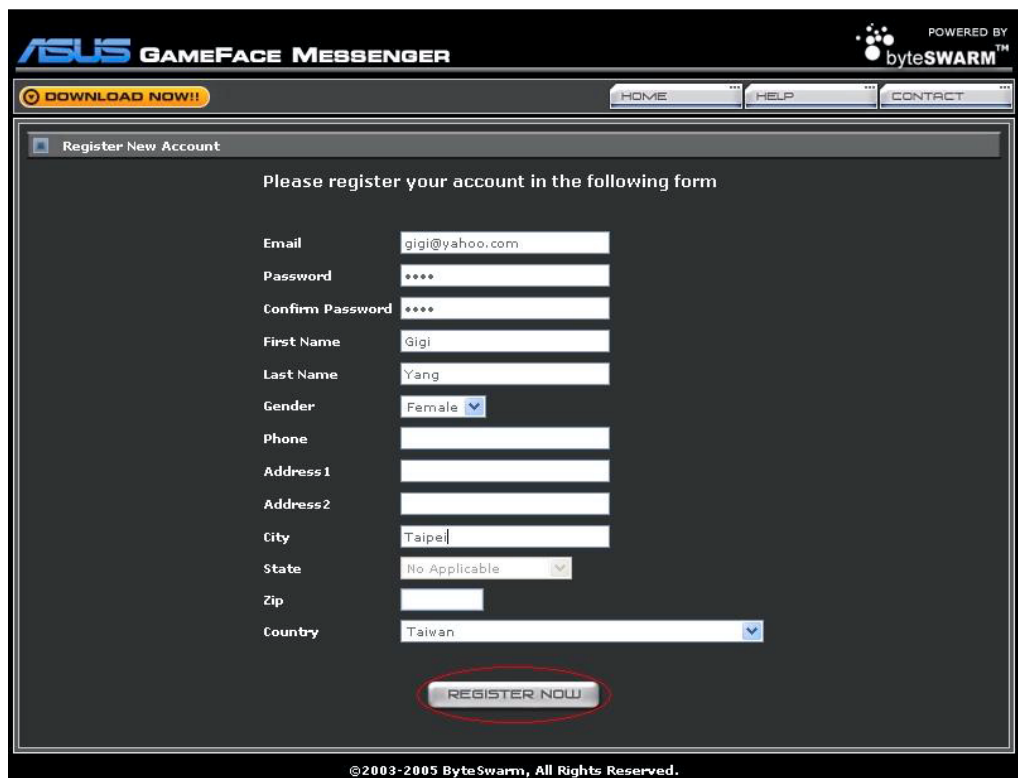
1. From the GameFace Messenger menu, click **Files > Go To . Support Home**.



2. Click **Register New Account** from the following website.



3. Key in your personal information then click **REGISTER NOW** when finished.



4. Follow the succeeding screen instructions to complete the registration process.

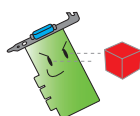
1.2.3 Sign in to GameFace Messenger

To sign in to GameFace Messenger:

1. If GameFace Messenger is not set up to automatically sign you in after you connect to the internet, click **File > Sign In**
- or -
click **Click here to sign in** in the main menu.
The following window appears.



2. If your sign-in information is not stored in your computer, key in your **Email** and **Password** in their respective text boxes then click **OK**.
3. If you want to store your sign-in information to your computer, click to check **Remember my ID & Password**.
4. If you want to automatically sign in after you connect to the internet, click to check **Sign me in automatically**.



We recommend not to perform steps 3 and 4 if you are sharing your computer with others.

1.2.4 Sign out GameFace Messenger

To sign out from GameFace Messenger:

From the GameFace Messenger menu, click **File > Sign Out**.

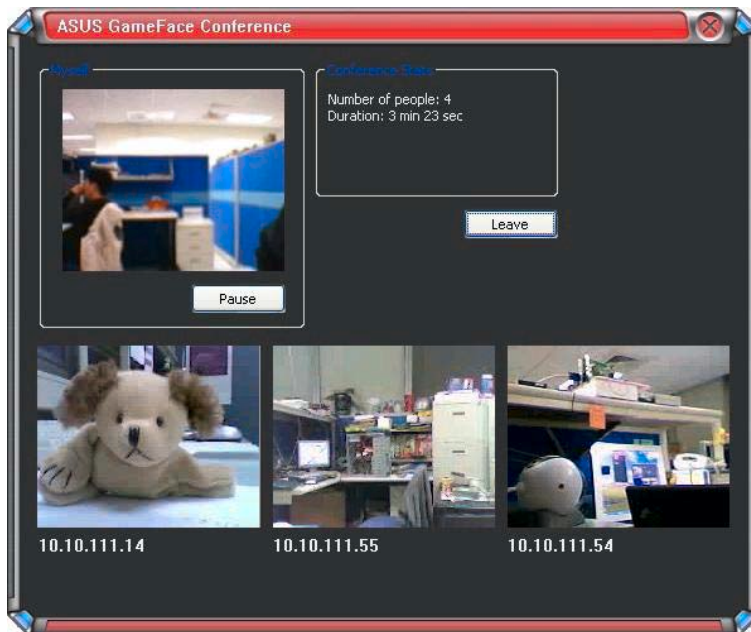
1.2.5 Invite users to GameFace Messenger conference

To invite users to a GameFace Messenger conference:

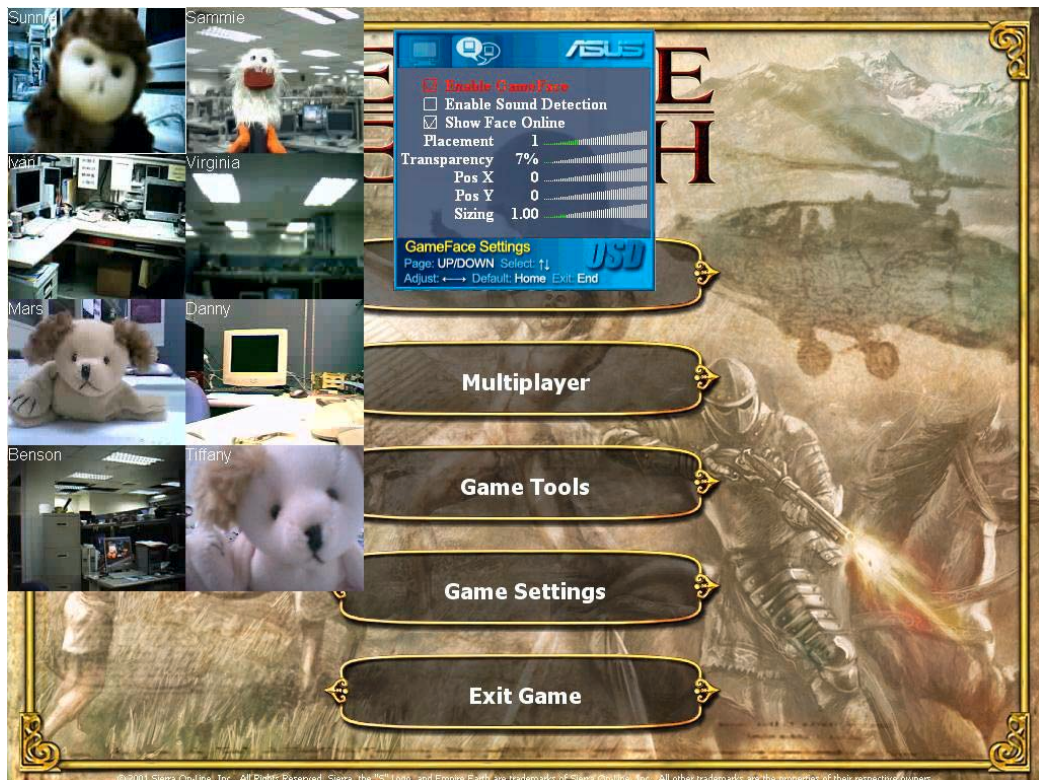
1. Click the right mouse button on an online user.
2. From the pop-up menu, click **Invite GameFace Conference**.



- ASUS GameFace Messenger allows up to a maximum of eight (8) users to join the conference. The following screen shows a 4-way conference.



- Press the OnScreen Display (OSD) hotkey to display the OSD menu. Check the **Enable Gameface** box to display GameFace Messenger while playing a fullscreen game.



1.2.6 Changing the display name

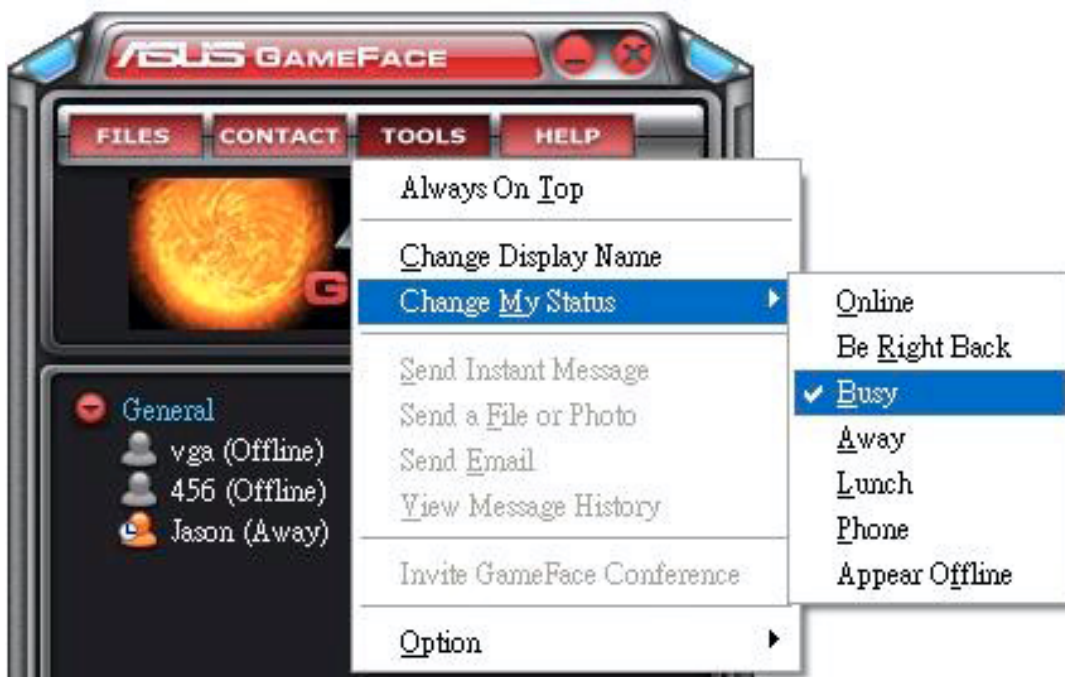
To change your display name:

From the GameFace Messenger menu, click **Tools > Change Display Name**. Follow succeeding screen instructions.

1.2.7 Changing status

To change your status:

From the GameFace Messenger menu, click **Tools > Change My Status** then select from the following list.



1.3 Contacts

1.3.1 Creating a new contact

To create a new contact:

From the GameFace Messenger menu, click the **Contact > Add a Contact**. Follow the succeeding screen instructions.



1.3.2 Deleting a contact

To delete an existing contact:

From the GameFace Messenger menu, click the **Contact > Delete a Contact**. Follow the succeeding screen instructions.

1.3.3 Changing contact view

To change contact list view:

From the GameFace Messenger menu, click **Contact > View Contact** then select either to display contact **By Display Name** or **By Email**.



1.3.4 Sorting contacts

To sort contact list:

From the GameFace Messenger menu, click **Contact > Sort Contact by** then select either to sort contact by **Group** or **Online/Offline** status.



1.3.5 Creating groups

Groups allow you to organize your contacts into different categories. To create a new group:

From the GameFace Messenger menu, click the **Contact > Create a New Group**. Follow the succeeding screen instructions.

1.3.6 Deleting groups

To delete a group:

From the GameFace Messenger menu, click the **Contact > Delete a Group**. Follow the succeeding screen instructions.

1.4 Tools

1.4.1 Sending an instant message

To send an instant message:

Click an online user from your list. The following window appears. Key in your message on the bottom text box then click **Send**.



1.4.2 Sending a file

To send a file:

1. Double-click an online user.
2. Click **Tools > Send a File or Photo**. Follow succeeding screen instructions to send file or photo.

1.4.3 Sending an email

To send an email:

1. Double-click an online user.
2. Click **Tools > Send Email**. Follow succeeding screen instructions to send email.

1.4.4 View message history

To view message history:

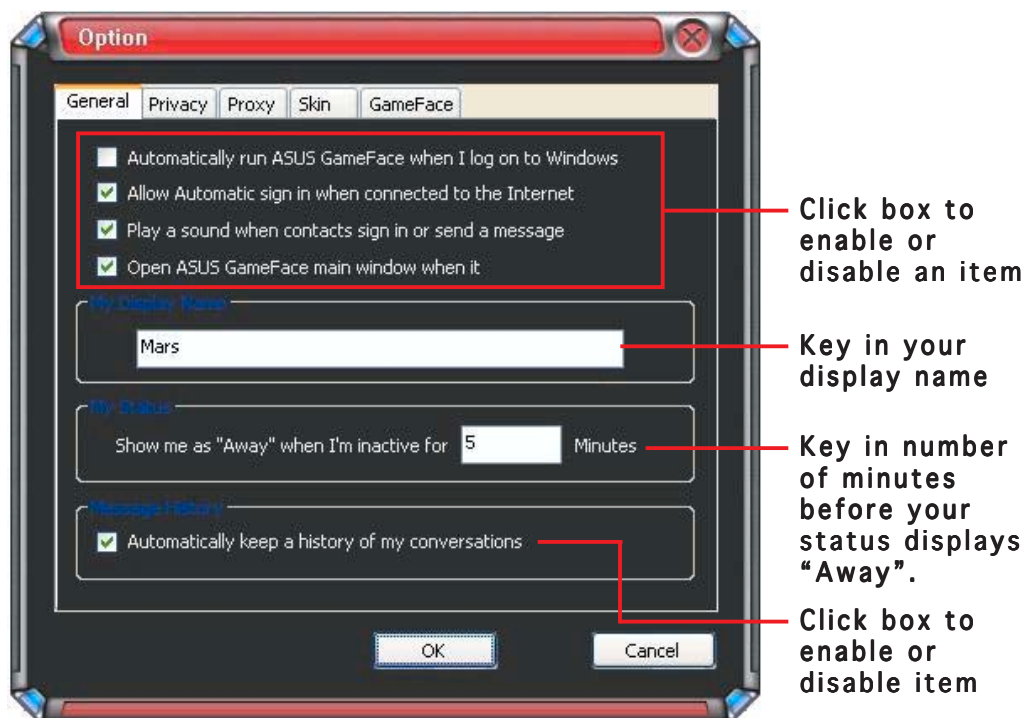
1. Double-click an online user.
2. Click **Tools > View Message History**. Follow succeeding screen instructions to view message history.

1.5 Settings

1.5.1 General

To display general settings:

1. From the GameFace Messenger menu, click **Tools > Option > General Setting**. The following window appears.

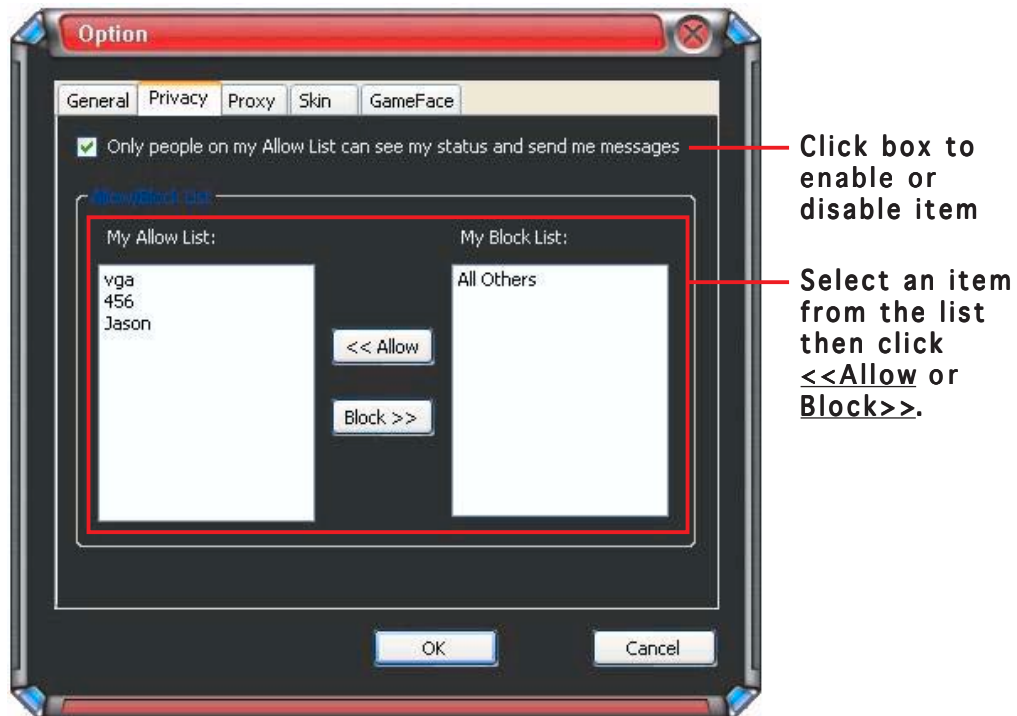


2. Click **OK** to apply settings or **Cancel** to disregard changes and return to main menu.

1.5.2 Privacy

To display privacy settings:

From the GameFace Messenger menu, click **Tools > Option > Privacy Setting**. The following window appears.

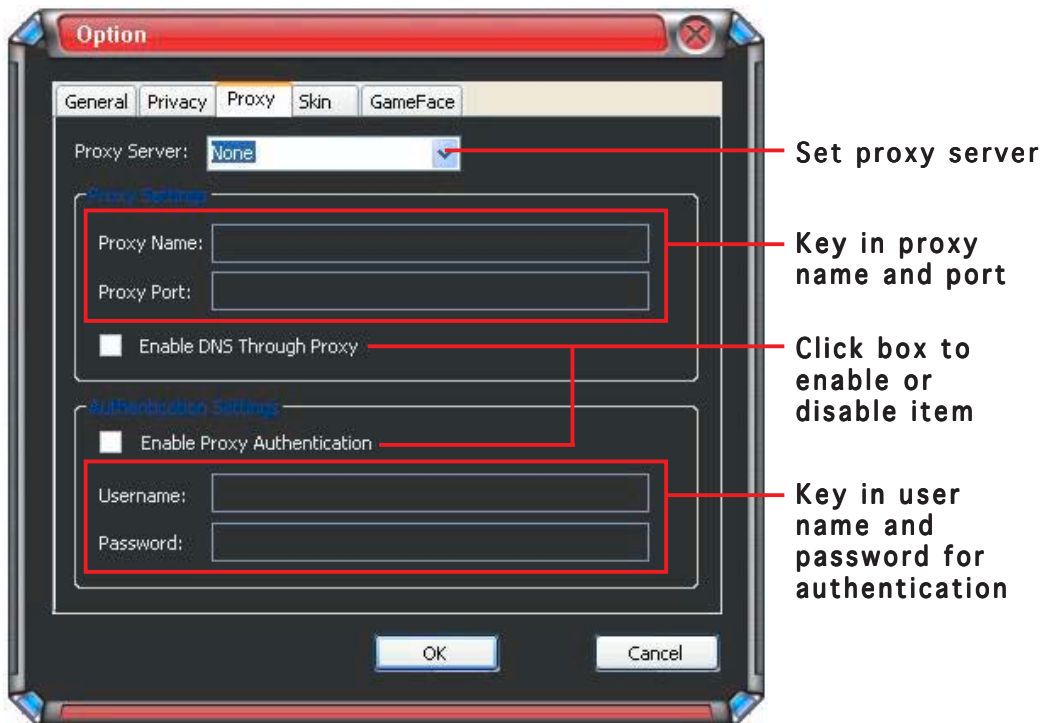


2. Click **OK** to apply settings or **Cancel** to disregard changes and return to main menu.

1.5.3 Proxy

To display proxy settings:

From the GameFace Messenger menu, click **Tools > Option > Proxy Setting**. The following window appears.

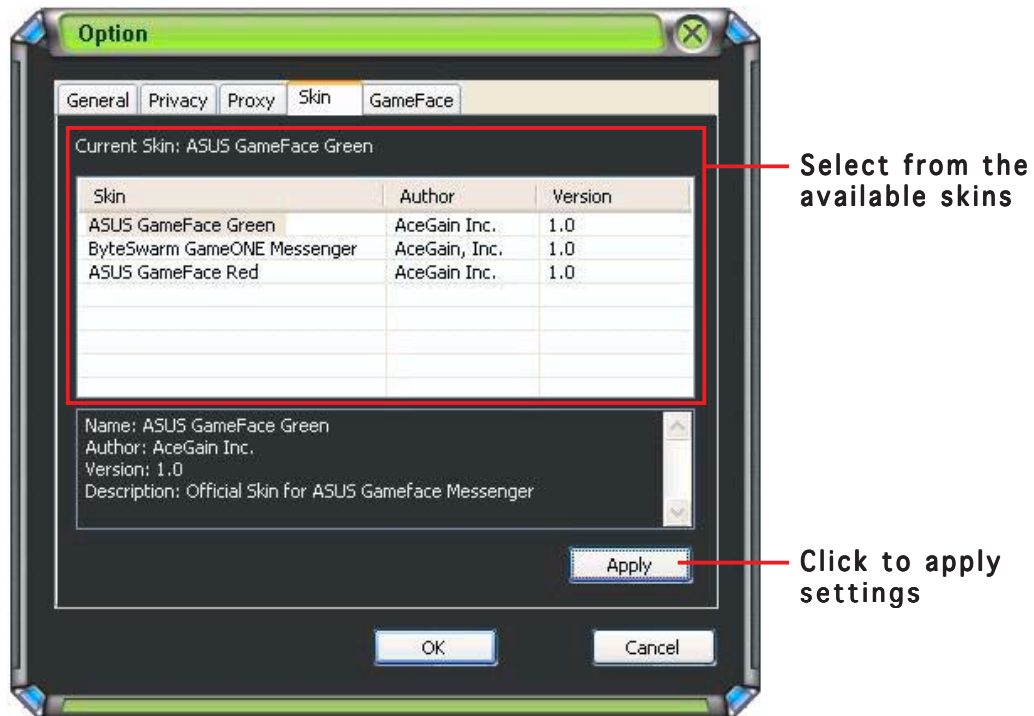


2. Click **OK** to apply settings or **Cancel** to disregard changes and return to main menu.

1.5.4 Skin

To display skin settings:

From the GameFace Messenger menu, click **Tools > Option > Skin Setting**. The following window appears.

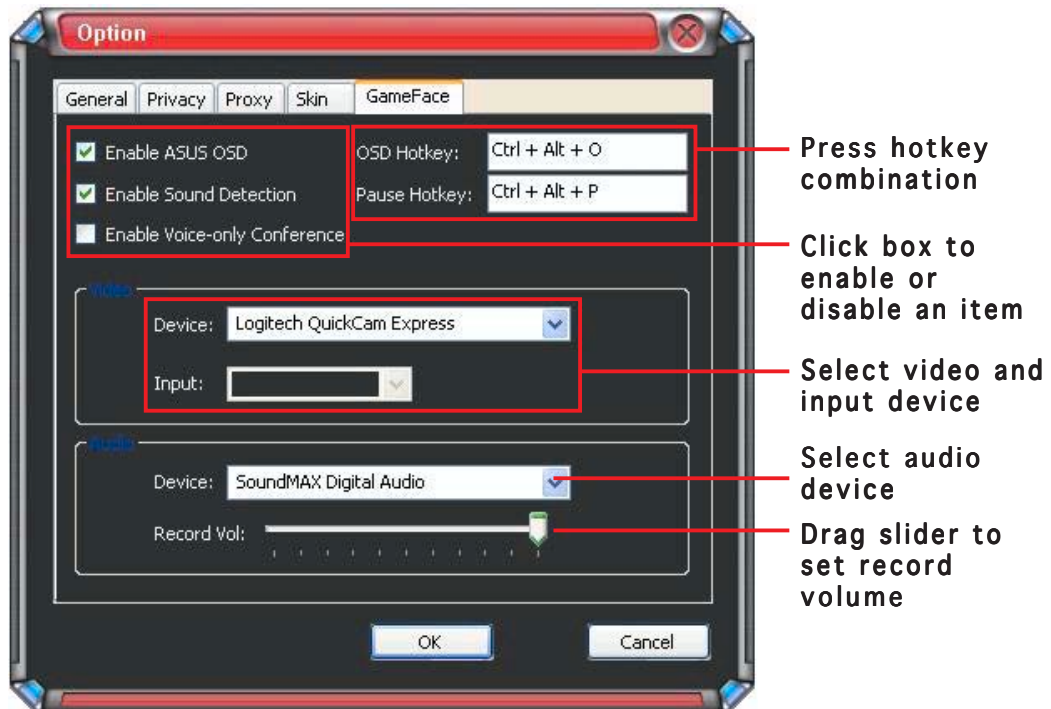


2. Click **OK** to apply settings or **Cancel** to disregard changes and return to main menu.

1.5.5 GameFace

To display GameFace settings:

From the GameFace Messenger menu, click **Tools > Option > GameFace Setting**. The following window appears.



2. Click **OK** to apply settings or **Cancel** to disregard changes and return to main menu.

2. ASUS Splendid

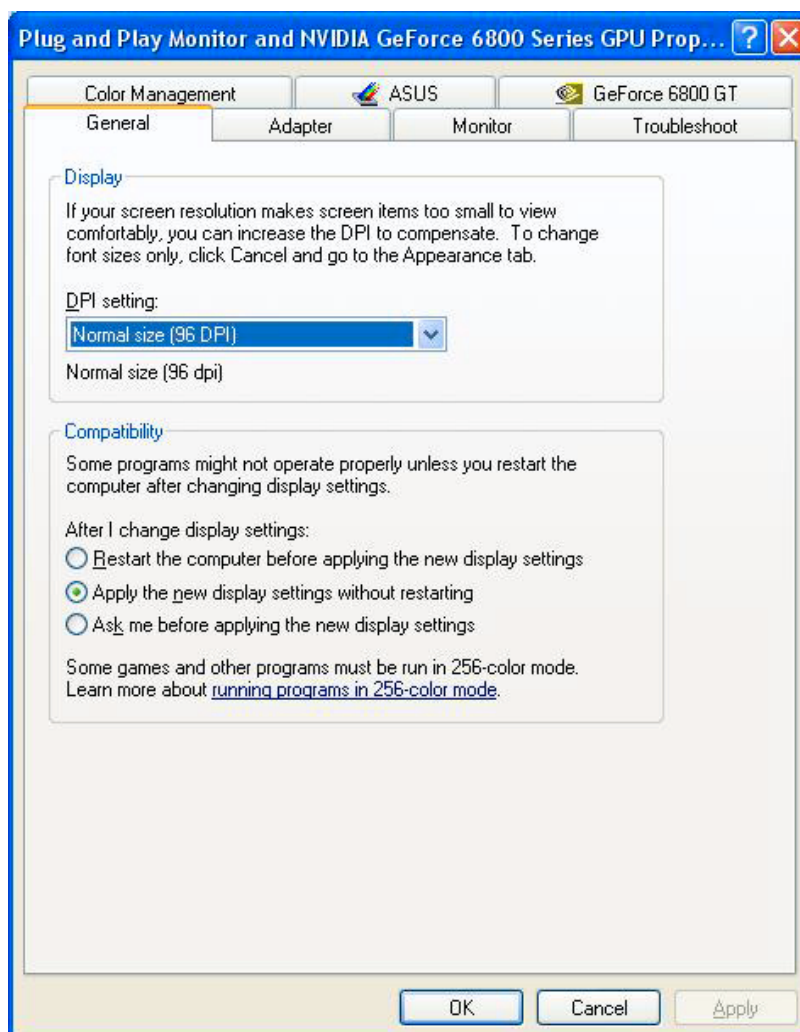
2.1 Introduction

The ASUS Splendid Video Enhancement Technology significantly improves the display quality of your system. Use this option to adjust the contrast, mode, or enhance display region.

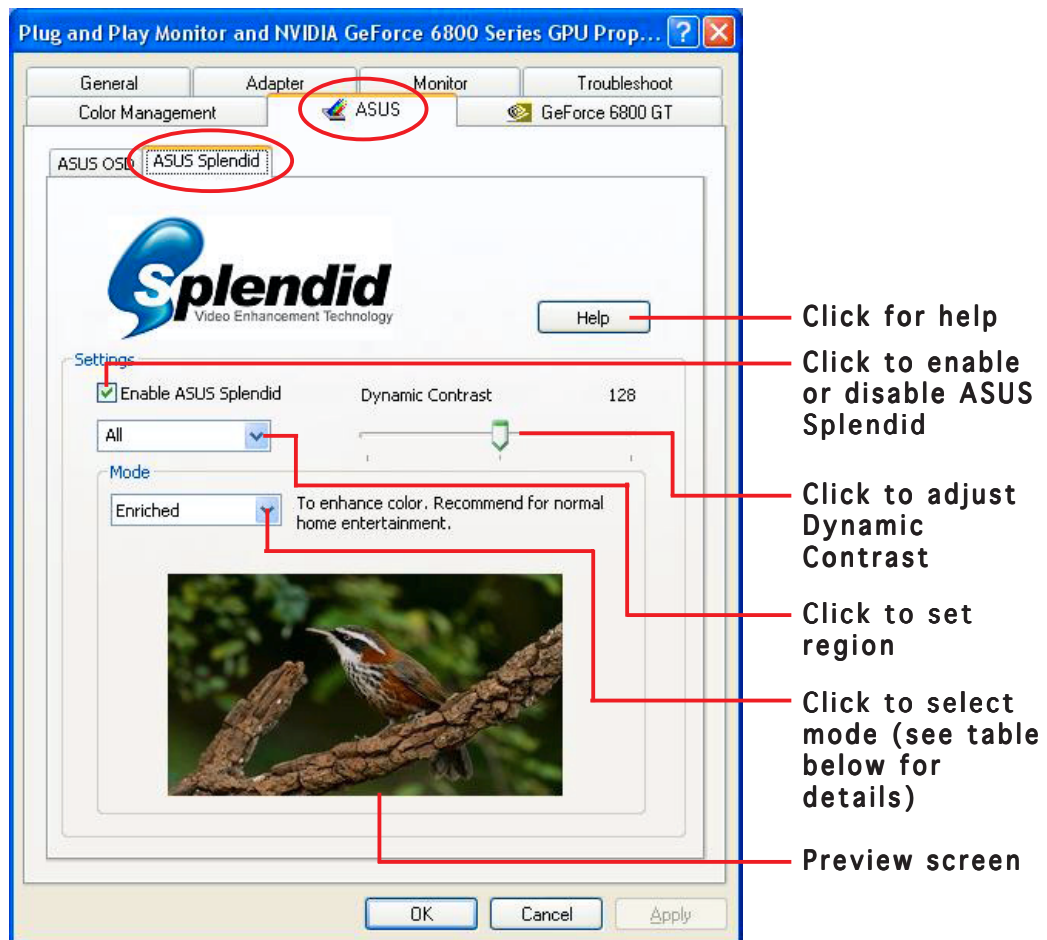
2.2 Launching ASUS Splendid

To launch ASUS Splendid:

1. Click the **Start** button. Go to **Control Panel** and load **Display**. From the Display Properties dialog box, select the **Settings** tab then click **Advanced**. The following window appears.



2. Select the **ASUS** tab then **ASUS Splendid** to display the following.



- Click for help
- Click to enable or disable ASUS Splendid
- Click to adjust Dynamic Contrast
- Click to set region
- Click to select mode (see table below for details)
- Preview screen

Splendid Mode Table

| MODE | Description |
|----------------------|--------------------------------------------------------------|
| Enriched | Recommended for home entertainment systems. |
| Vivid Colors | Enhances saturation and contrast for a more saturated color. |
| Theater | Softer contrast for a theater-like effect. |
| Crystal Clear | Detailed enhancement with a bright effect. |

3. Click **OK** to effect changes.

3. ASUS OnScreenDisplay (OSD)

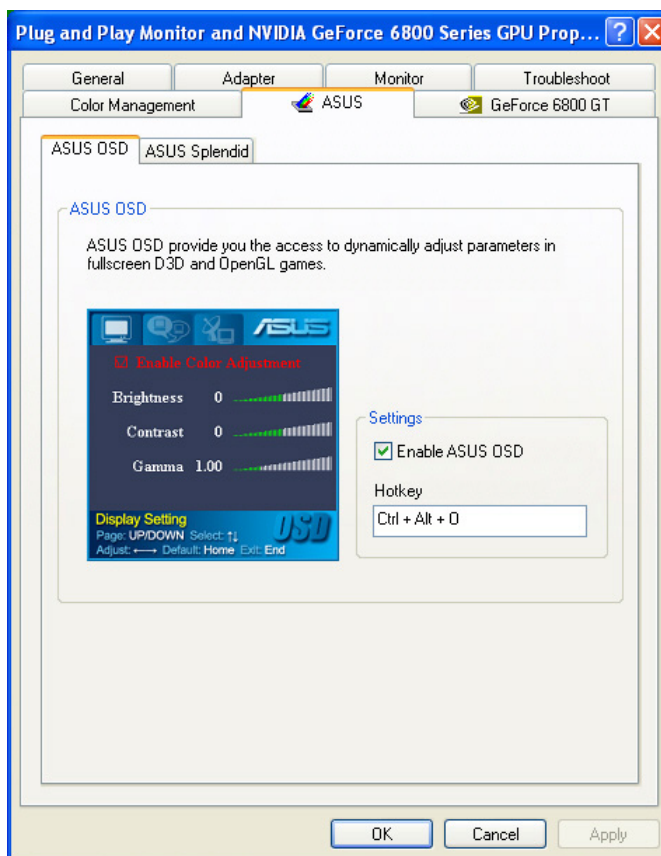
3.1 Introduction

The ASUS OnScreenDisplay feature allows you to dynamically adjust the display parameters while playing fullscreen 3D and OpenGL games.

3.2 Enabling ASUS OSD

To launch ASUS OSD:

1. Click the **Start** button. Go to **Control Panel** and load **Display**. From the Display Properties dialog box, select the **Settings** tab then click **Advanced**.
2. Select the **ASUS** tab then **ASUS OSD** to display the following.



3. Click the **Enable ASUS OSD** check box.
4. Click on the Hotkey textbox then press desired keys. The Ctrl and Alt keys are default keys.
5. Click **OK** to apply settings and exit or click **Apply** settings. Click **Cancel** if you want to discard settings and exit.

4. ASUS GameLiveShow

4.1 Introduction

ASUS GameLive Show allows users to share real-time gaming experience while playing full-screen games. Users can remotely monitor a GameLive Show broadcast using the Internet Explorer browser. You can also record and replay your games using the GameReplay feature.

4.2 Getting Started

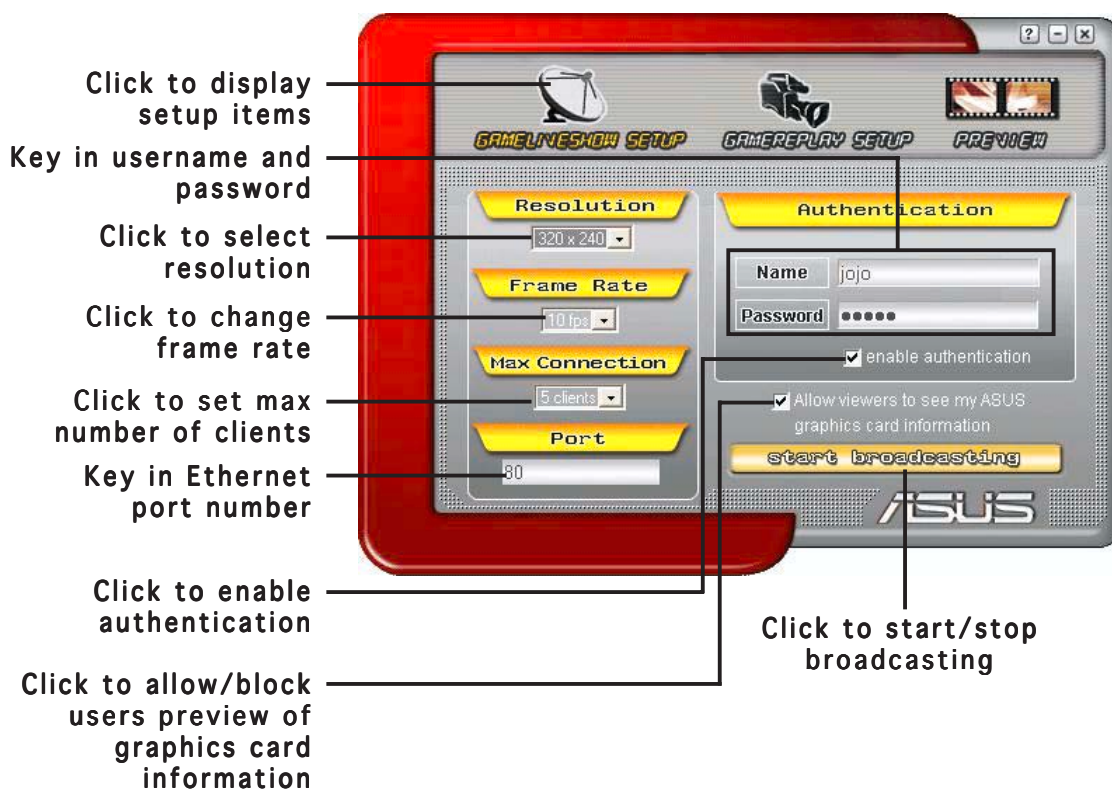
4.2.1 Launching ASUS GameLiveShow and GameReplay

To launch ASUS GameLiveShow:

Double-click the **GameLiveShow** icon  on your desktop.

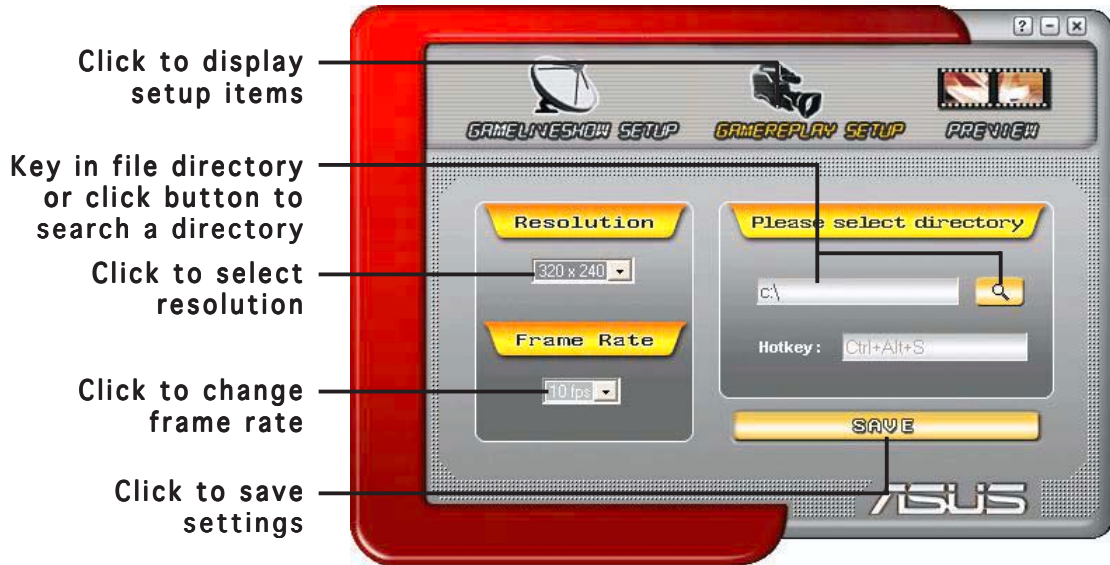
4.2.2 GameLiveShow setup

The GameLiveShow setup menu allows you to set the resolution, frame rate, connection, ethernet port and username/password for authentication. Click the **GAMELIVESHOW SETUP** icon to display the following items.



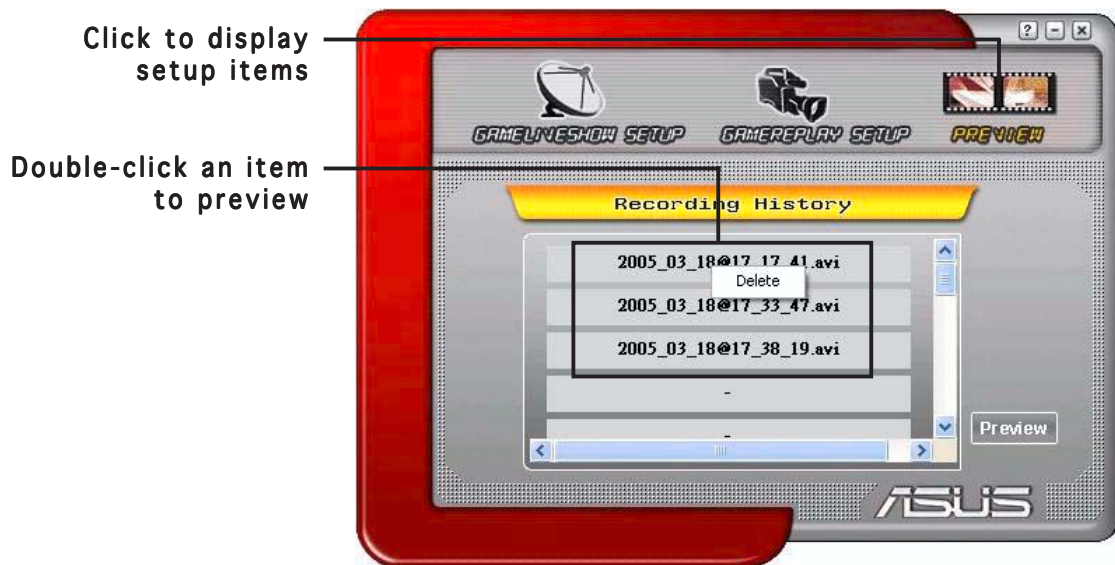
4.2.3 GameReplay setup

The GameReplay setup menu allows you to set the resolution, frame rate, file directory, and GameReplay hotkey. Click the **GAMEREPLAY SETUP** icon to display the following items.



4.2.4 Preview

The Preview menu allows you to watch recorded games using GameReplay. Click the **PREVIEW** icon to display the following items.



4.2.5 Enabling GameReplay in OSD

To enable GameReplay in OSD:

1. In a full-screen game, launch OSD using the OSD hotkeys.
2. Select **GameLiveShow Settings** then check **Enable GameReplay**.



3. Press the GameReplay hotkeys (Ctrl+Alt+S) to start or stop recording. A red blinking dot appears on the bottom left corner of your screen when recording.

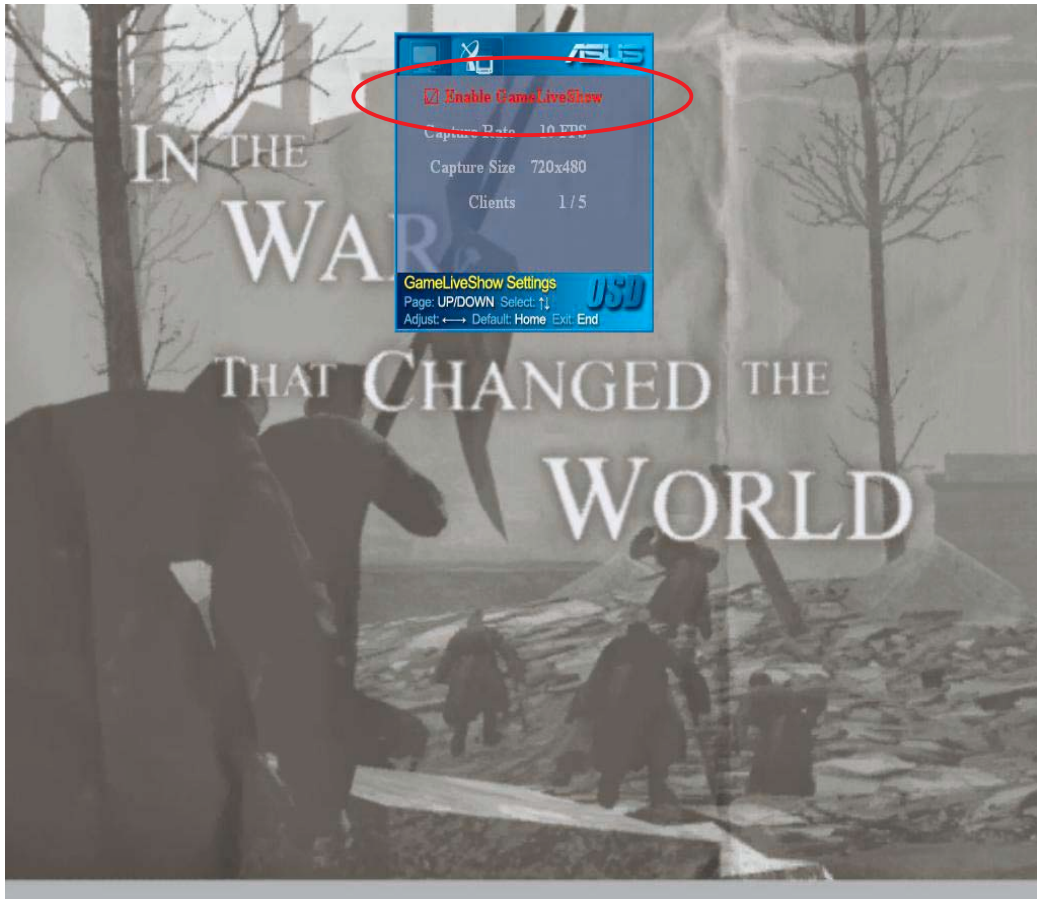


4.2.6 Enabling GameLiveShow in OSD

Before other clients can preview your broadcast, launch the OnScreen Display and enable GameLiveShow.

To enable GameLiveShow in OSD:

1. In a full-screen game, launch OSD using the OSD hotkeys.
2. Select **GameLiveShow Settings** then check **Enable GameLiveShow**.



3. Press <End> to exit.

4.2.7 Remote client setup

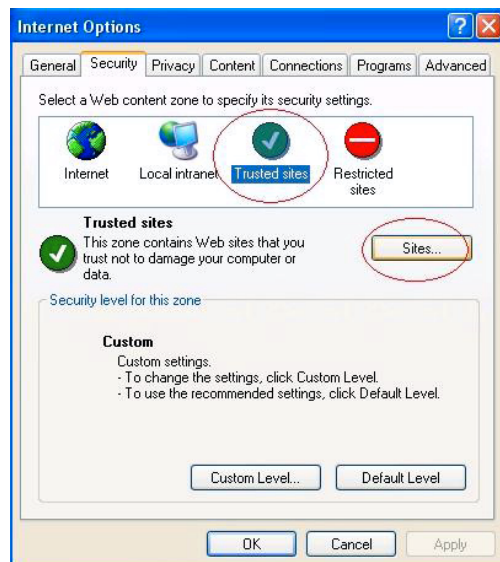
Before remote clients can preview a GameLiveShow broadcast, you need to configure your Internet Explorer security options.

To configure your IE browser:

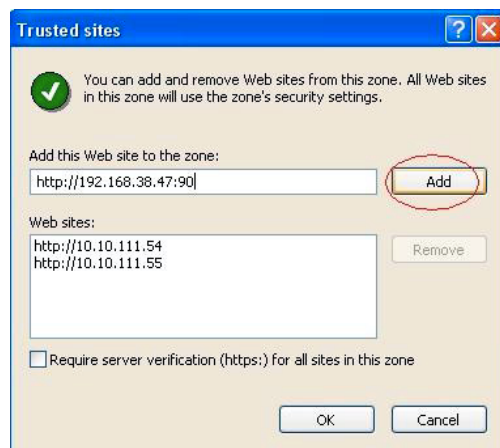
1. Launch Internet Explorer.
2. Go to **Tools > Internet Options**.



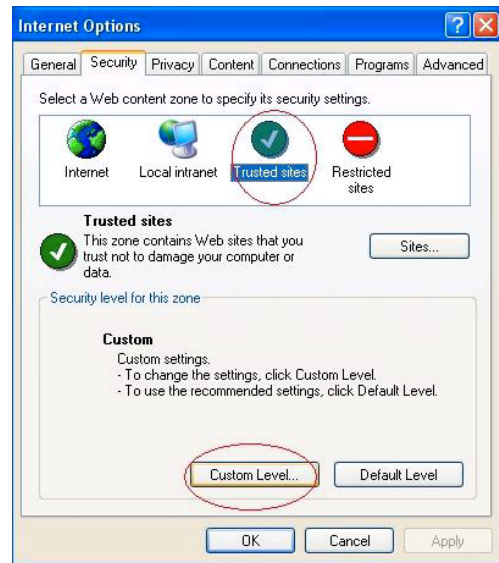
3. From the Internet Options dialog box, select the **Security** tab then click the **Trusted Sites** icon.
4. Click **Sites** to display the Trusted sites window.



5. Key in the Internet Protocol (IP) of the GameLiveShow host on the text box then click **Add**.
6. Click **OK** when done or **Cancel** to disregard changes.



7. Click **Custom Level** to display the Security Settings window.



8. Enable all items then click **OK**.
9. Click **OK** to exit the Internet Options dialog box.

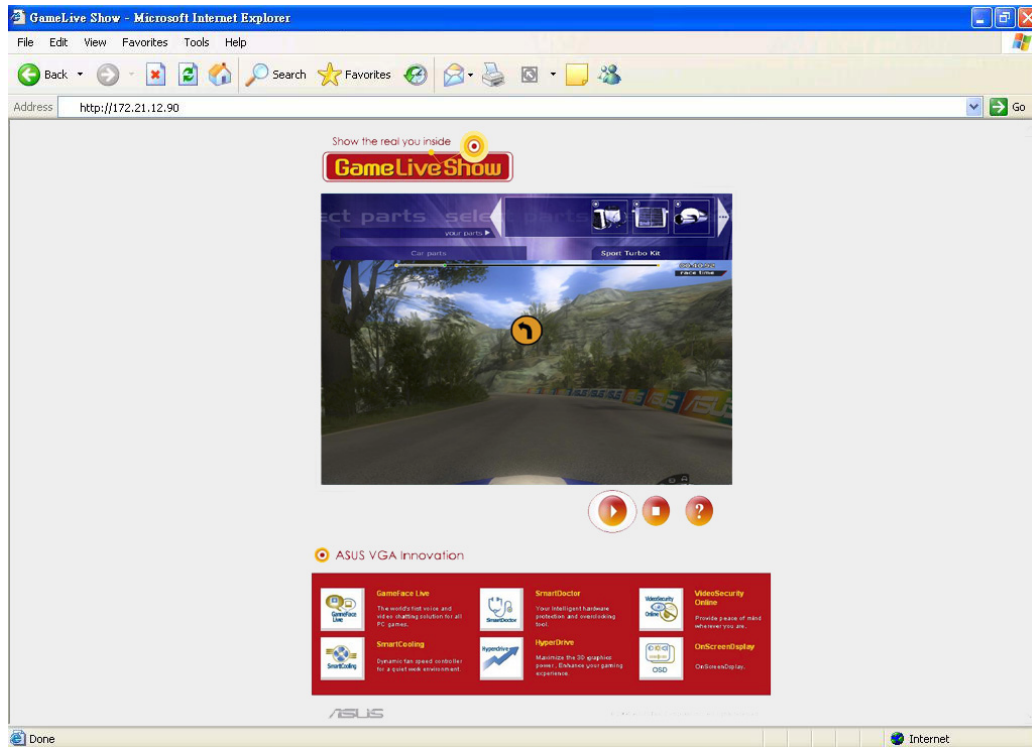


4.2.8 Remote client preview

After you configure your IE security settings, you can start a remote preview of a GameLiveShow broadcast.

To watch remote preview:

1. From the IE Address box, key in the IP address of the computer that is broadcasting a GameLiveShow.



2. Click the play button  to start preview.


5. ASUS SmartDoctor

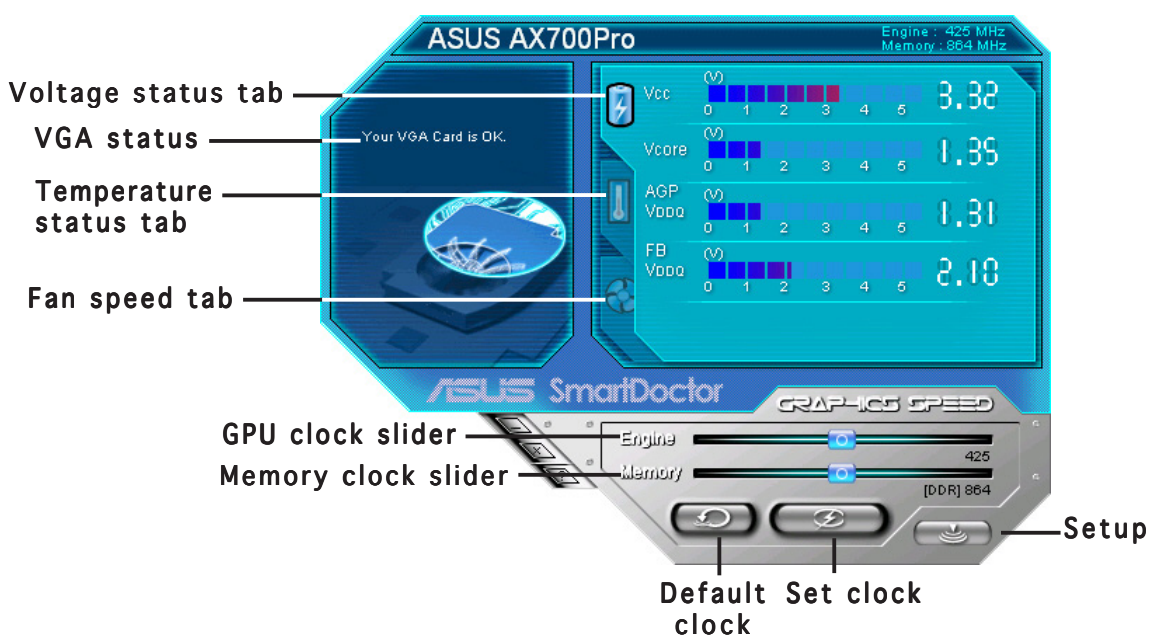
ASUS SmartDoctor is designed to monitor the temperature, voltage and fan condition of your graphics card. This utility also smartly cools down your Graphics Processing Unit (GPU) temperature and allows you to adjust the graphics card clock settings.

5.1 Functions

- Monitors graphic chip temperature, fan speed and voltage.
- Notifies user of irregular hardware events, such as overheating, fan malfunction and out-of-safe-range voltage.
- Smartly cools down the graphic chip when its temperature is over the limit.
- Automatically adjusts the fan speed according to the GPU temperature.
- Allows manual adjustment of GPU core and memory clock.

5.2 Launching ASUS SmartDoctor

The ASUS SmartDoctor utility is a memory resident program that is launched everytime you start Windows and remain in the computer memory to check the graphics card status. To access the ASUS SmartDoctor menu and its functions, double-click on the **SmartDoctor icon**  found on the Windows taskbar.

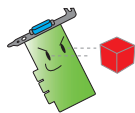
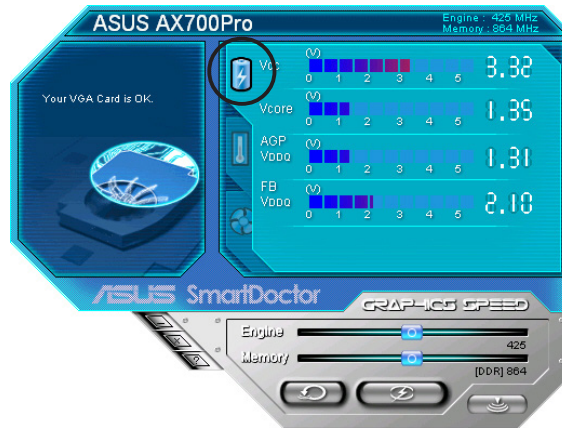


6. ASUS SmartDoctor

The utility provides an easy-to-use menu to access its features.

6.1 Voltage status

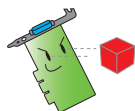
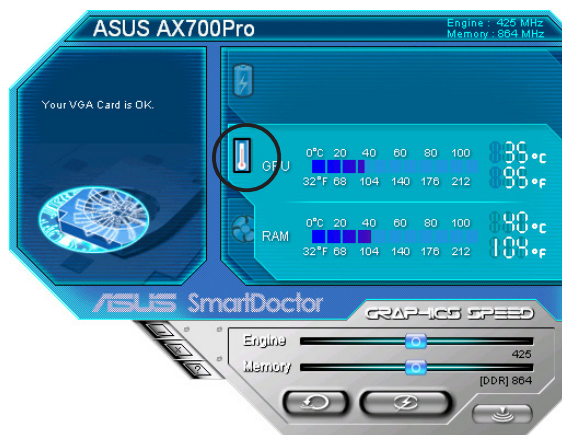
Click the **Voltage status** tab to display the voltage status of your graphics card.



- The AGP bus VDDQ voltage and AGP bus 3.3 voltage should be supplied steadily by your motherboard. Otherwise, your system will crash.
- The FB VDDQ voltage item is grayed or disabled if your graphics card does not support voltage monitoring for this item.

6.2 Temperature status

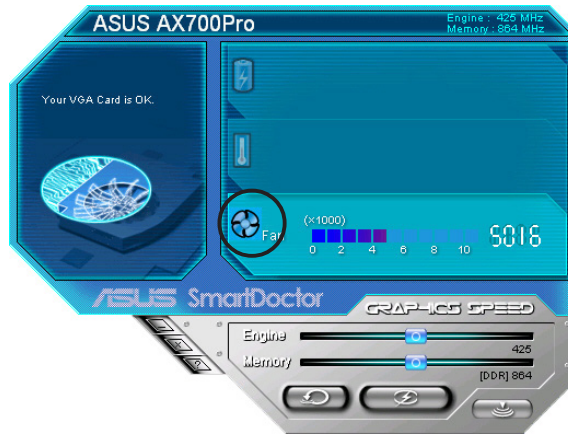
Click the **Temperature status** tab to display the GPU and RAM temperature status of your graphics card.



If your graphics card does not support RAM temperature monitoring, the item is grayed or disabled.

6.3 Fan speed status

Click the **Fan speed** tab to display the current fan speed of your graphics card.

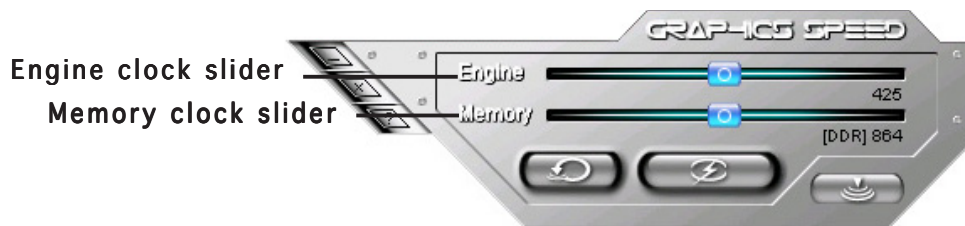



6.4 Engine and memory clock settings

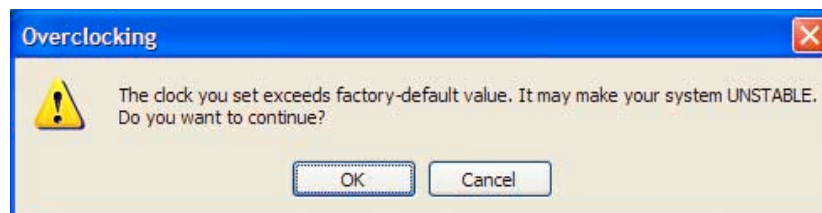
You can manually adjust the graphics card engine (GPU) and memory clock to enhance your graphics card performance.

To adjust the engine and memory clock:

1. Move the **Engine** clock slider to adjust the engine clock.
2. Move the **Memory** clock slider to adjust the memory clock.




3. Press  to set.
4. SmartDoctor prompts a warning message. Click **OK**.



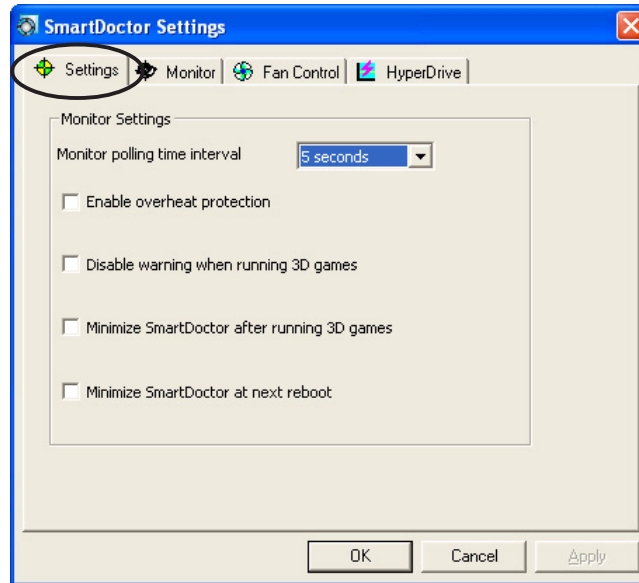
5. The engine clock you set appears on a dialog box. Click **OK**.

6.5 Advanced setup features

To launch the SmartDoctor Settings dialog box, click  on the SmartDoctor menu.

6.5.1 Settings

To change the settings, click the **Settings** tab from the SmartDoctor Settings dialog box.



Monitor Settings

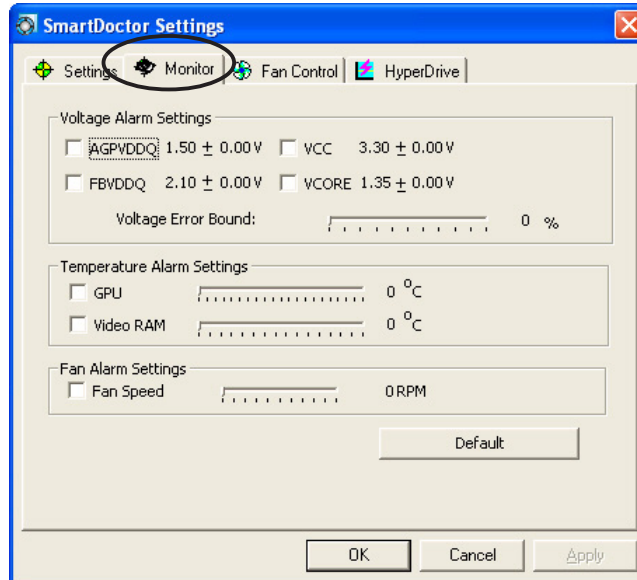
To change monitor settings:

1. Click the combo list box to set **Monitor polling time interval**.
2. Click the check box to enable or disable any of the monitor setting features.
3. Click **Apply** or **OK** to save settings.

6.5.2 Monitor

To change voltage, temperature and fan monitor settings:

1. Click the **Monitor** tab from the SmartDoctor Settings dialog box.



Voltage Alarm Settings

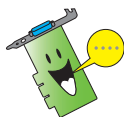
- Click the check box to enable or disable the alarm for AGPVDDQ (*for AGP cards*) or PCIE 12V (*for PCIe cards*), VCC, FBVDDQ or VCORE voltages.
- Move the slider to adjust the Voltage Error Bound percentage.

Temperature Alarm Settings

- Click the check box to enable or disable the alarm for the GPU and Video RAM temperature.
- When enabled, you can move the slider to adjust the GPU or Video RAM alarm temperature.

Fan Alarm Settings

- Click the check box to enable or disable the Fan speed alarm.
- When enabled, you can move the slider to adjust the fan speed.



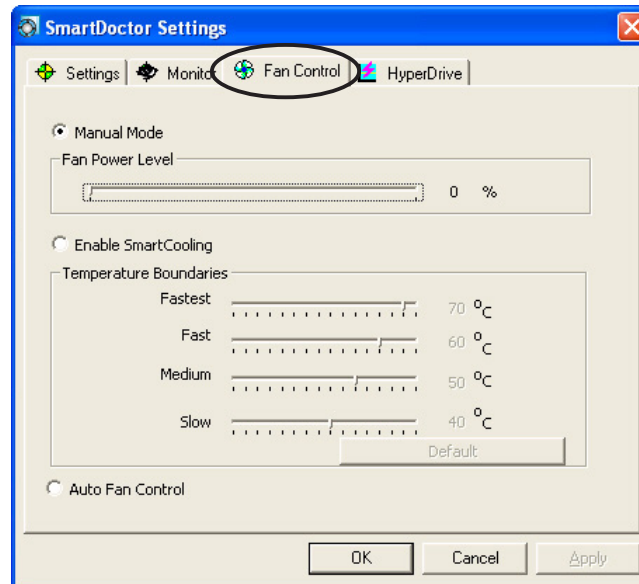
Click the **Default** button to load optimum values for stable performance.

2. Click **Apply** to apply settings or click **OK** to save settings and exit. Click **Cancel** to discard changes and exit.

6.5.3 Fan Control

To change the fan control settings:

1. Click the **Fan Control** tab from the SmartDoctor Settings dialog box.

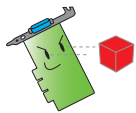


2. Click the option buttons to select fan control feature. The fan control has three features: Manual mode, SmartCooling and Auto Fan Control.

Manual mode - You can manually change the fan speed by adjusting the slider of each temperature mode.

Enable Smartcooling - SmartDoctor will automatically adjust the fan speed according to the GPU temperature. For example, if the GPU temperature rises over 60 degrees Celsius, SmartDoctor will raise the fan speed to the fastest level to cool the GPU. Move the slider to adjust the temperature for fan speeds or click **Default** to load optimum settings.

Auto Fan Control - SmartDoctor automatically adjusts the fan speeds for optimum performance.



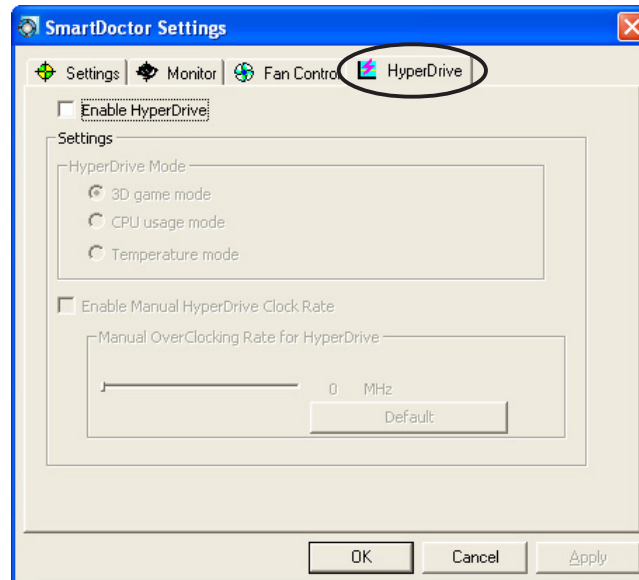
The **Fan Control** tab is not displayed if your graphics card does not support the Fan Speed Control feature.

4. Click **Apply** to apply settings or click **OK** to save settings and exit. Click **Cancel** to exit and discard changes.

6.5.4 HyperDrive

To change the ASUS HyperDrive settings:

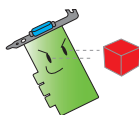
1. Click the **HyperDrive** tab from the SmartDoctor Settings dialog box.



ASUS HyperDrive

To activate HyperDrive:

1. Click the **Enable HyperDrive** check box to enable or disable the HyperDrive feature.
2. Click the option buttons to select the HyperDrive Mode.

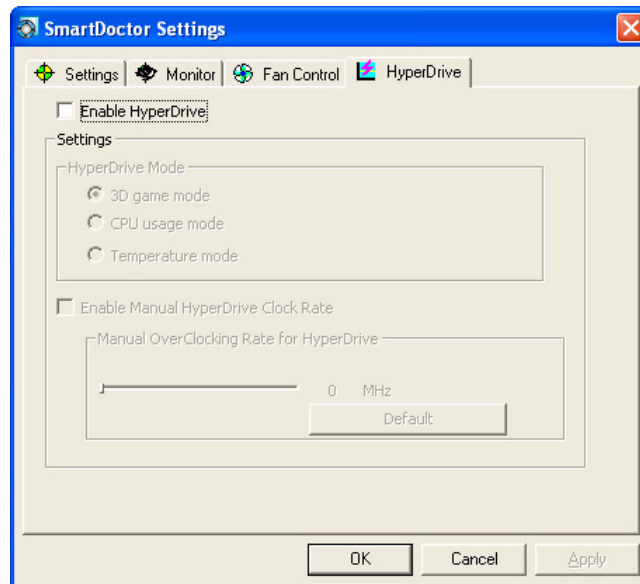


Make sure to install the **ASUS Enhanced driver** when using the HyperDrive 3D mode.

HyperDrive Modes

- A. **3D Game mode** - In 3D Game mode, ASUS SmartDoctor automatically sets the GPU clock to its highest possible value when playing 3D games for better 3D performance. It reverts to its normal GPU core clock after playing 3D games.
- B. **CPU usage mode** - When set to this mode, ASUS SmartDoctor dynamically adjusts the GPU core clock depending on the Central Processing Unit (CPU) work load. ASUS SmartDoctor increases the GPU core clock when the CPU is busy and decreases it when your CPU is idle.
- C. **GPU Temperature mode** - In Temperature mode, ASUS SmartDoctor smartly adjusts the GPU clock according to its temperature. If the GPU temperature increases, ASUS SmartDoctor automatically decreases the GPU core clock, and vice versa.

3. When the HyperDrive is enabled, you can enable the **Manual HyperDrive Clock Rate** and move the slider to adjust the frequency.
4. Click **Default** to load optimum settings.



5. Click **Apply** to apply settings or click **OK** to save settings and exit. Click **Cancel** discard changes and exit.

7. ASUS VideoSecurity Online

7.1 Launching ASUS VideoSecurity

To launch ASUS VideoSecurity:

From the Windows taskbar, click the **Start** button then select **All Programs -> ASUS -> ASUS Video Security -> ASUS Video Security** to display the following menu.



7.2 Setup

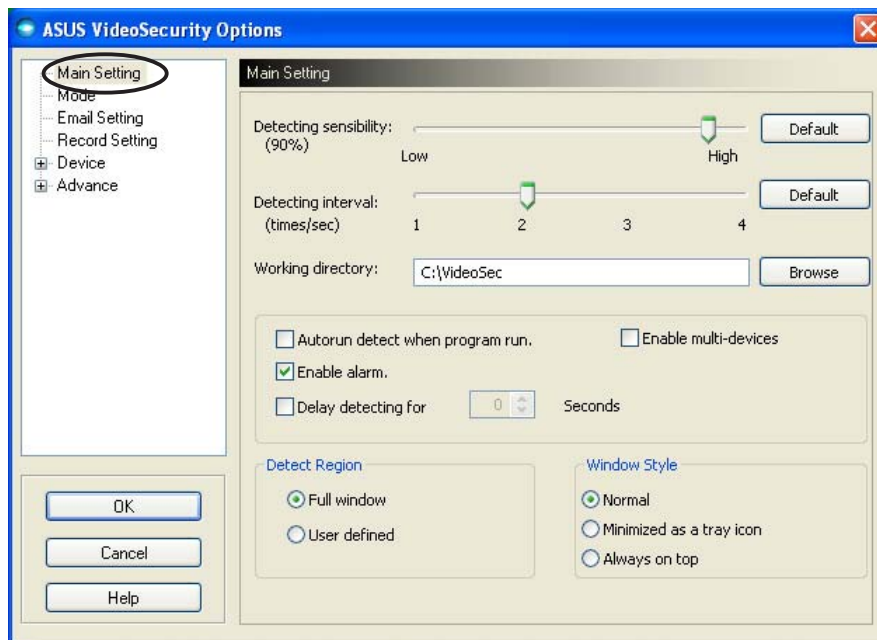
To display the ASUS VideoSecurity setup window, click from the ASUS VideoSecurity menu.



7.2.1 Main

The main settings section allows you to adjust the detecting sensibility, detecting interval and working directory. This section also contains the check boxes to enable various features including the alarm, autorun, use of multi-devices, and setting of detecting delay. You can also set the detect region and windows style in this section.

To modify the Main setup options, click **Main Setting** from the Video Security setup dialog box. The following submenu appears:



Adjusting the detecting sensibility parameter

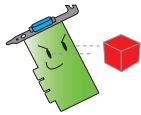
To adjust the detecting sensibility:

Move the slider to adjust the **Detecting sensibility** parameter. This item sets the receptibility of VideoSecurity to environment changes.

- OR -

Press **Default** to set pre-assigned values based on normal light and temperature conditions.





-
- Temperature and lighting may affect monitoring.
 - The quality of the video capture device is also very important in setting the sensibility.
 - Test different values to fine-tune this parameter for optimum performance.
-

Setting the detecting interval parameter

To set the detecting interval parameter:

Move the **Detecting interval** slider. The interval (times/sec) or scan rate has four configuration options: 1 times/sec, 2 times/sec, 3 times/sec and 4 times/sec.

- OR -

Click **Default** to set the recommended scan rate.



Set to a higher scan rate for a more accurate detection.

Setting the working directory

To set the working directory:

Key in the **working directory** on the textbox or click **Browse** to locate and set the working directory.

The default working directory is **C:\VideoSec**. Everytime you launch ASUS VideoSecurity, a new folder is created. The folder filename indicates the current time and date the application was launched. For example, “2005.06.16_04.20.10” means that ASUS VideoSecurity was launched on June 06, 2005 at 4:20:10 AM.



Do not change the working directory name while ASUS VideoSecurity is running. Doing so will cause a runtime error!

Setting other features

To enable or disable the autorun feature, alarm, use of multi-devices and/or set the detecting delay:

- Click the **Autorun detect when program run** check box to enable or disable the autorun feature of ASUS VideoSecurity.

Autorun detect when program run.

- Click the **Enable alarm** check box to enable or disable the alarm feature.

Enable alarm.

- Click the **Enable multi-devices** check box to enable or disable the alarm feature.

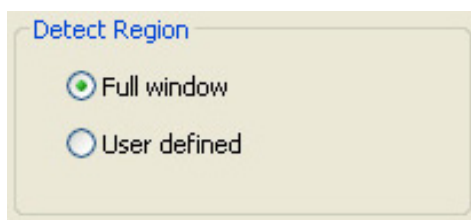
Enable multi-devices

- Click the **Delay detecting for XXX seconds** check box to enable or disable the delay feature when a motion is detected. Key in or click the arrows to set the delay (in seconds).

Delay detecting for Seconds

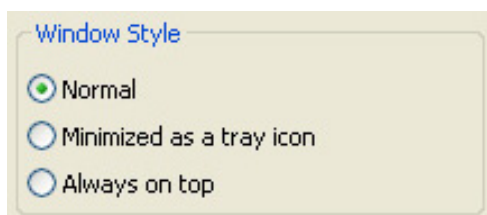
Setting the detection region

To set the detect region, click the Detect Region option buttons.



Setting the Windows display style

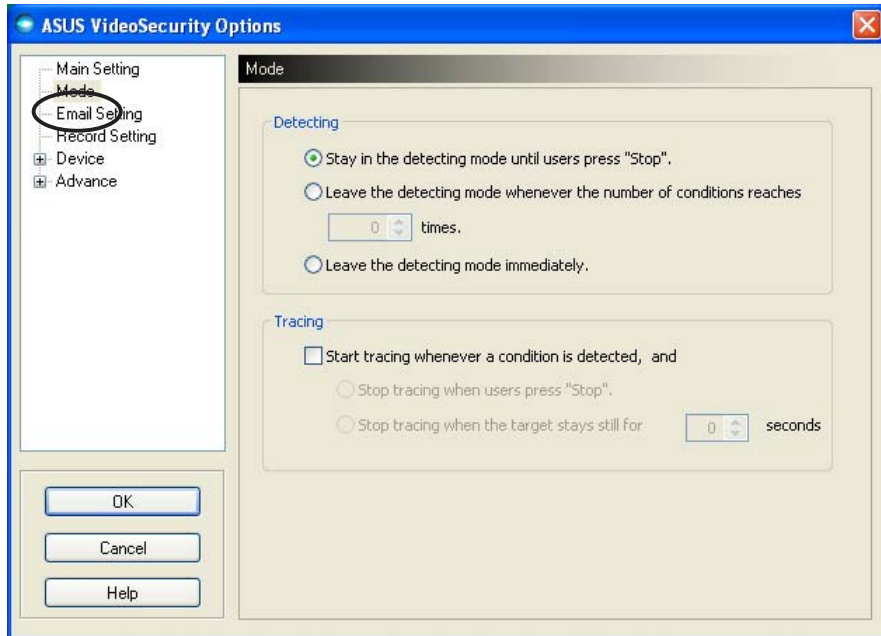
To set the Windows display style, click the Window Style option buttons.



Make sure to click **OK** after making changes.

7.2.2 Mode

The Mode section allows you to configure the Detecting and Tracing method. To modify the mode settings, click the **Mode** item from the ASUS VideoSecurity setup dialog box. The following submenu appears:

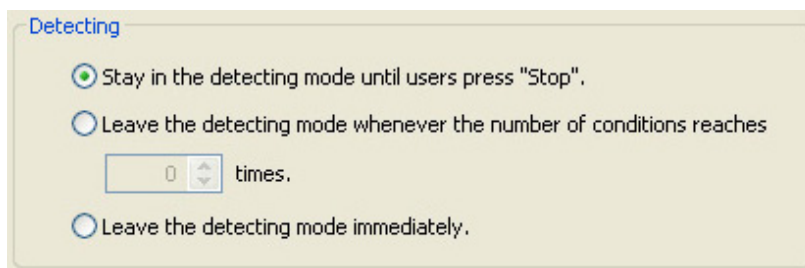


Setting the detecting mode

To set the detecting mode:

Click the option button of your desired mode. The following describes the available configuration options:

- **Stay in the detecting mode until users press “Stop”** - when a condition is detected, VideoSecurity will continue detecting the region until you press the **Stop** button on the main menu.
- **Leave the detecting mode whenever the number of conditions reaches n times** - this option allows you to set the maximum number of conditions n before VideoSecurity stops detecting a region. To set n , key in your desired number in the text box or click the arrows to adjust the desired maximum number.
- **Leave the detecting mode immediately** - sets VideoSecurity to stop detecting a region when a condition is detected.

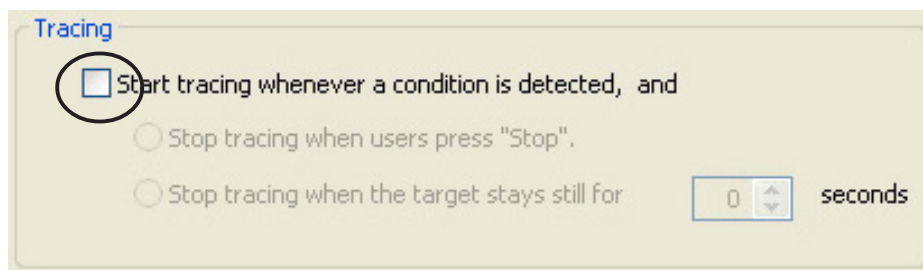


Setting the tracing method

To set the tracing method:

Click to enable the **Start tracing whenever a condition is detected** check box. The following describes the available tracing modes when a condition is detected:

- **Stop tracing when user's press "Stop"** - automatically stops tracing when you press the **Stop** button on the main menu.
- **Stop tracing when the target stays still for x seconds** - automatically stops tracing when the detect region remains still for x seconds. To set x , key in the number in the text box or click the arrows keys to adjust value.



Tracing

Start tracing whenever a condition is detected, and

Stop tracing when users press "Stop".

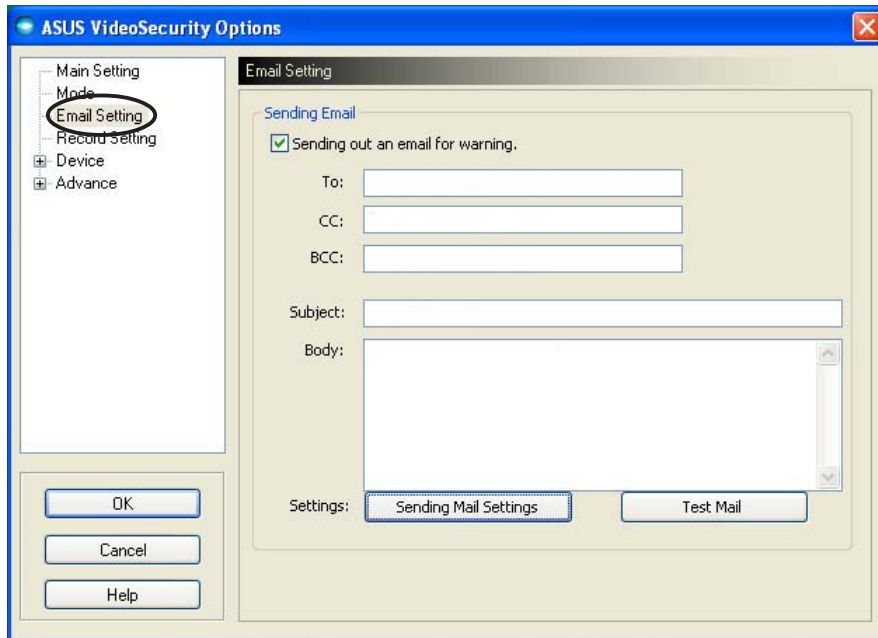
Stop tracing when the target stays still for seconds



Make sure to click **OK** after making changes.

7.2.3 Email setting

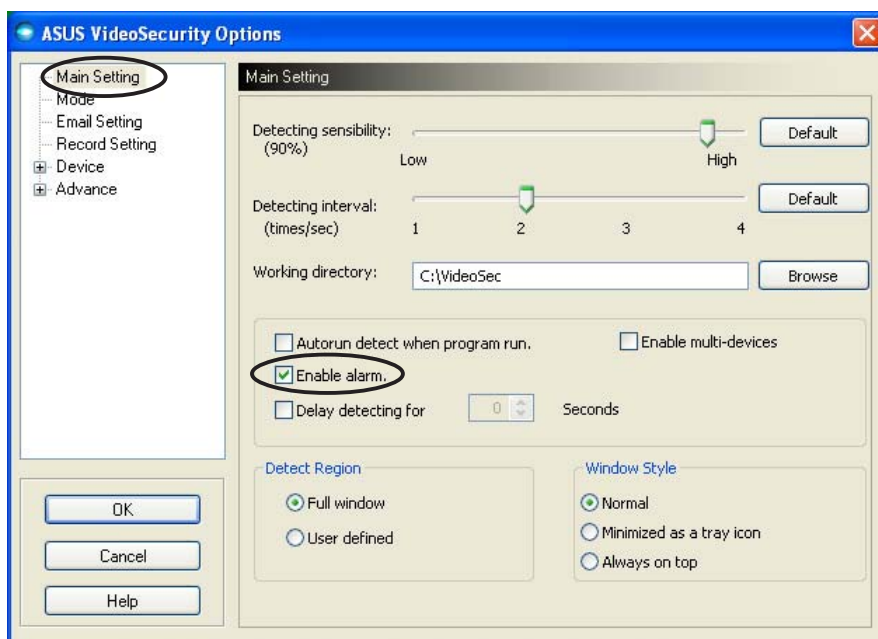
The Email setting section contains the email parameters necessary to send an email when the email alarm feature is enabled. To modify the email settings, click the **Email Setting** item from the setup dialog box. The following submenu appears:



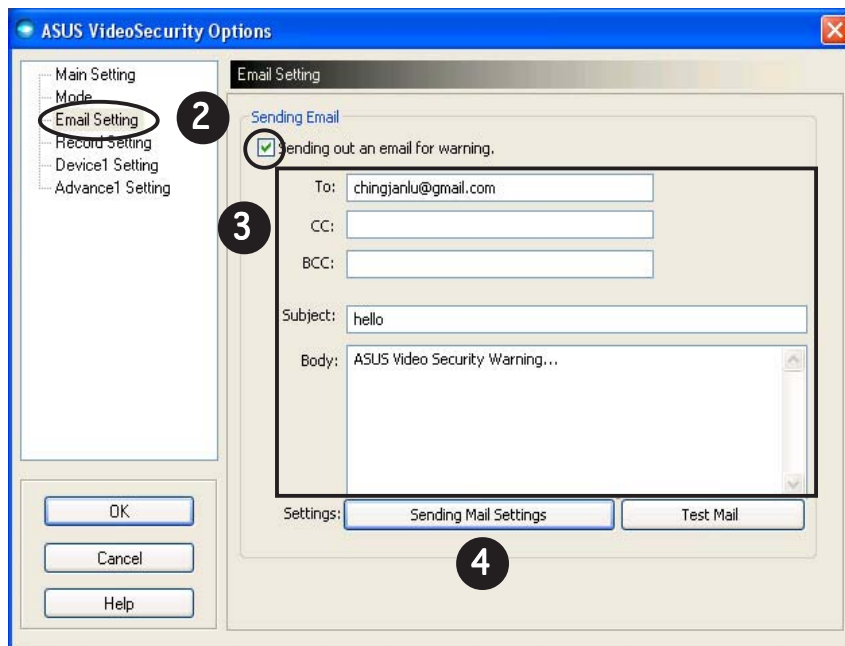
Using the email warning feature

To use the email warning feature:

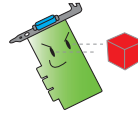
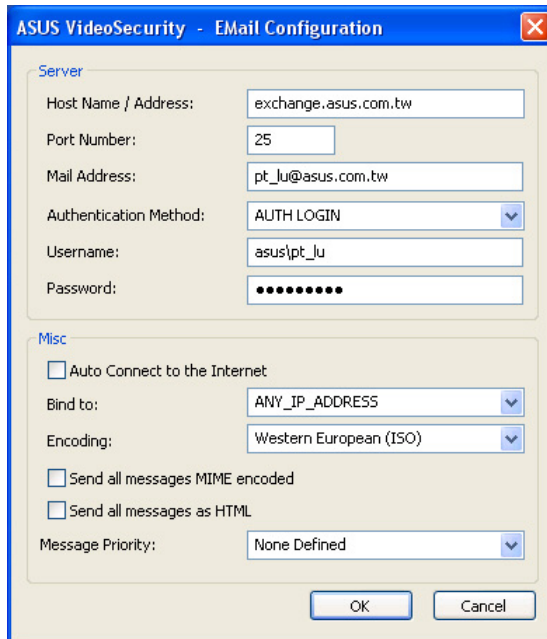
1. From the Main Setting section, click to check **Enable alarm**. Refer to page 38 for details.



2. Click the **Email Setting** item from the setup dialog box then click to enable **Send out an email as warning**.
3. Key in the email address(es) of the recipient(s), the subject, and body content. The following describes these email parameters:
 - **To** - refers to the electronic mail address of the main addressee of the note when VideoSecurity detects a motion in the surveillance region.
 - **CC** - carbon copy, the recipient of a copy sent to the main addressee.
 - **BCC** - blind carbon copy, the recipient of a copy to the main addressee, but in this case, doesn't indicate to the main addressee that you also sent the same copy.
 - **Subject** - email topic.
 - **Body** - content of the note to the main addressee.



4. Click **Sending Mail Settings** to configure the email parameters. The following window appears:



If necessary, consult your system administrator for authorization and other server parameter settings.

4.1 Server

Contains the parameters and protocols necessary to send your email. Key in the host name/address, port number, mail address, authentication method, username, and password. The following describes the server parameters:

Host Name/Address - refers to the simple mail transfer protocol (SMTP) server address that is used to transfer mail over the Internet. Example: exchange.companyname.com or 149.112.144.153.

Port Number - the number identifying the type of connection requested by a remote computer on the Internet. The default value is 25.

Mail Address - refers to the sender's email address.

Authentication method - refers to preferred server authentication method when checking the user name and password.

Username - refers to your user account name.

Password - secret set of characters and/or numbers required to access a computer system. In this case, to allow you to send and receive emails.

4.2 Misc

The Misc group contains miscellaneous parameters and server settings. Refer to the following parameter descriptions:

Auto Connect to the Internet - when enabled, the utility will check if an Internet connection already exists. If the connection between the IP you bind and the destination mail server can't be established, the utility will automatically dial-up. Click the check box to enable or disable this feature.

Bind to - selects your local IP to bind for Internet connection. Click the list box to select IP.

Encoding - sets the encoding method for the character set of email sent. Click the list box to select encoding method.

Send All messages MIME encoded - allows support for multipurpose Internet mail extensions (MIME) character sets. Click the check box to enable or disable this feature.

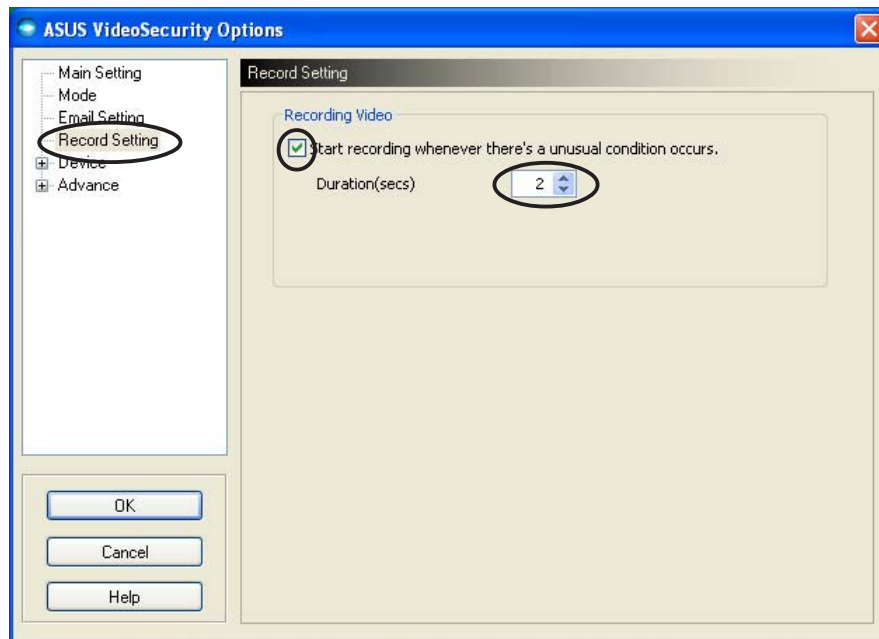
Send All messages as HTML - allows you to send your messages in hypertext markup language (HTML) format. Click the check box to enable or disable this feature.

Message Priority - sets the email message priority level. Click the check box to enable or disable this feature.

5. Click **OK** to save the configuration or **Cancel** to abort.
6. Click **Test Mail** to test your email configuration.
7. When finished, click **OK** to save settings and exit.

7.2.4 Record setting

The Record setting section contains parameters that allows you to configure the recording duration whenever condition is detected. To set the recording parameters, click the **Record setting** item from the setup dialog box. The following submenu appears:

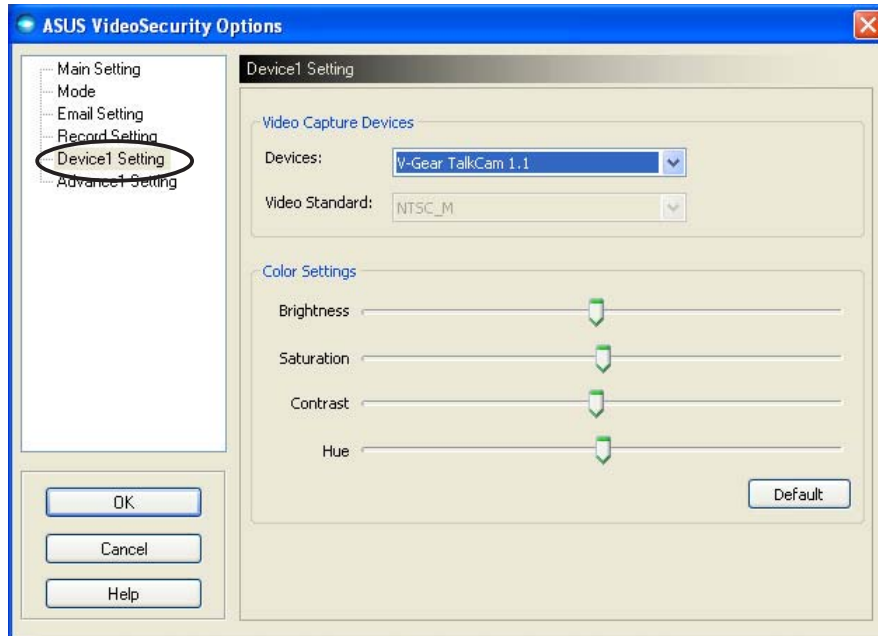


To set the recording parameters:

1. Click to enable **Start recording whenever there's an unusual condition occurs.**
2. When enabled, key in or use the arrows to set the recording duration in seconds.
3. Click **OK** to save settings and exit.

7.2.5 Device

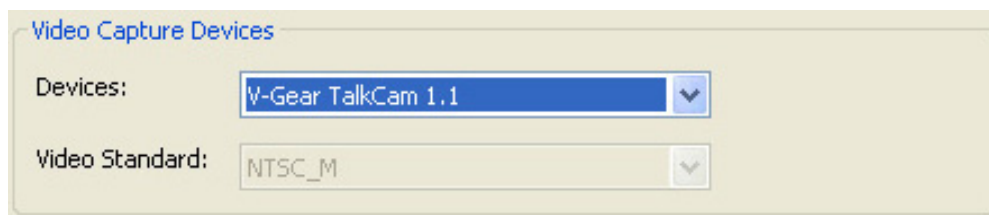
The Device section allows you to set the video capture devices and color settings. To select a video capture device or adjust color settings, click the **Device Setting** item from the ASUS VideoSecurity setup dialog box. The following sub-menu appears:



Configuring capture device

To configure device:

1. Click the **Devices** list box to select video capture device.
2. Click the **Video Standard** list box to set the video standard in your area.



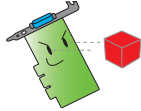
3. Move the slider to adjust the brightness, saturation, contrast or color hue.
- OR -
Click **Default** to load recommended values.



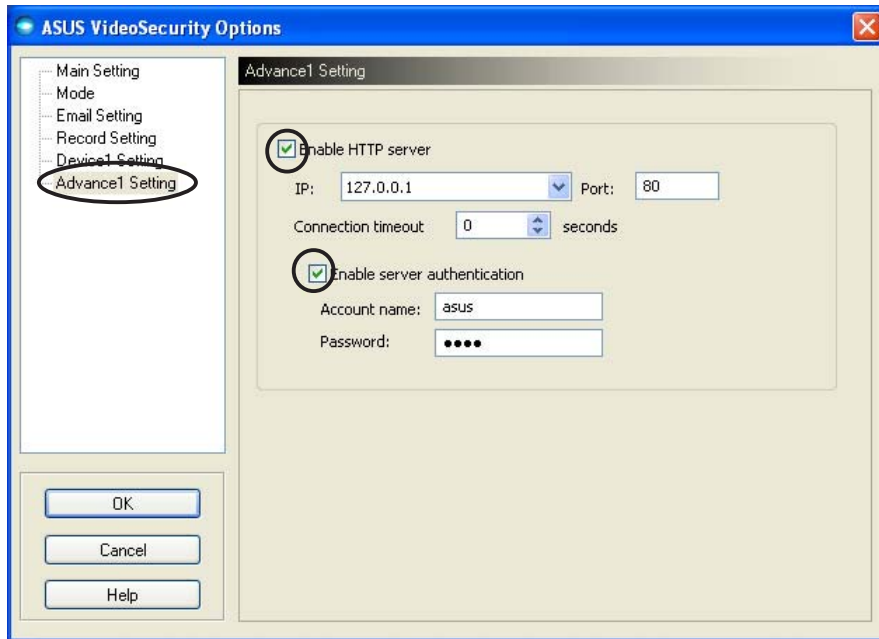
4. Click **OK** to save settings and exit.

7.2.6 Advanced

The Advanced section contains advanced hypertext transfer protocol (HTTP) settings and parameters. To configure these items, click the **Advanced** tab from the setup page.



If necessary, call your system administrator for assistance.



Setting the HTTP server

To enable the HTTP server and set its parameters:

1. Click to check the **Enable HTTP Server** check box.
2. When enabled, key in your Internet Protocol (IP) address, Port and Connection timeout (in seconds). Refer to page 43 for descriptions of these fields.
3. Click to check the **Enabled server authentication** check box.
4. When enabled, key in your account name and password.
5. Click **OK** to save settings and exit.

7.3 Video Source

The Video Source lists available video devices installed to your system. When available, you can exchange the different video source types.

7.3.1 Video source setting

To set the video source:

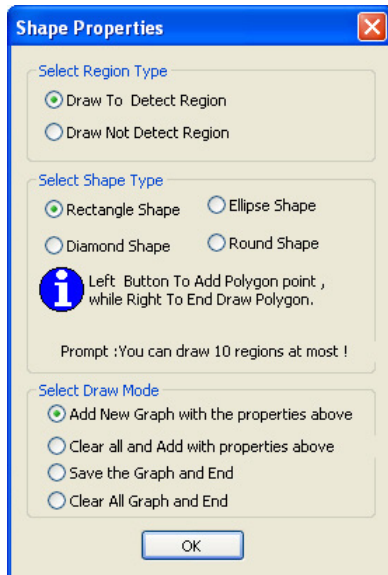
1. Click **Video Source** from the VideoSecurity main menu.
2. From the pop-up menu, select from the available video sources. The selected video source output is displayed on the upper screen.



7.4 Set detect region

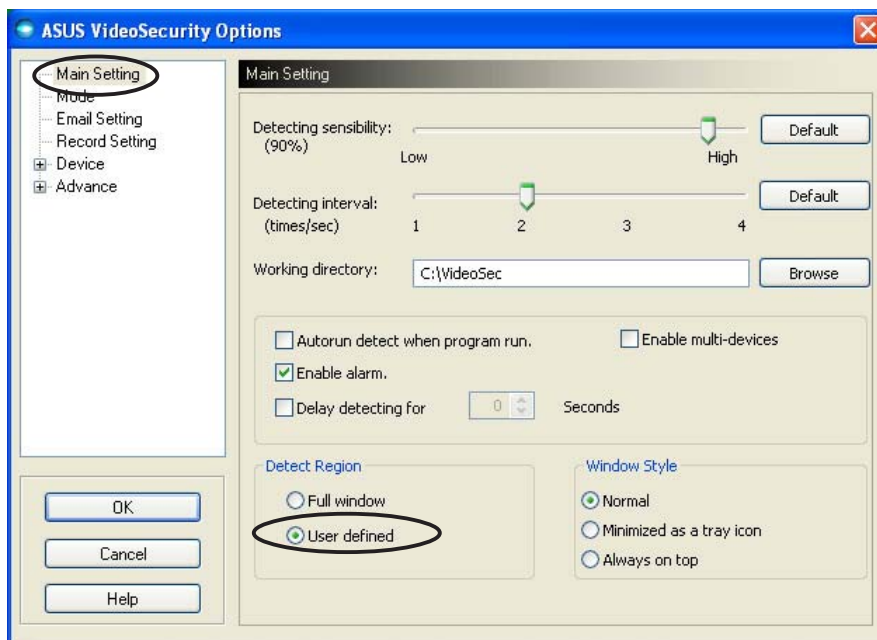
The Detect Region is a user-defined area or areas that VideoSecurity will monitor for condition changes.

To configure the detect region properties, click **Set detect region** from the VideoSecurity main menu. The following dialog box appears.

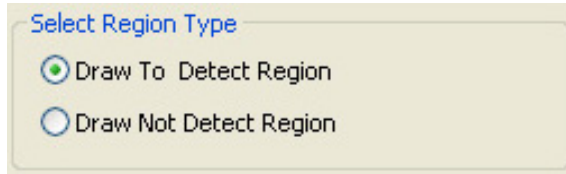


To set detect region:

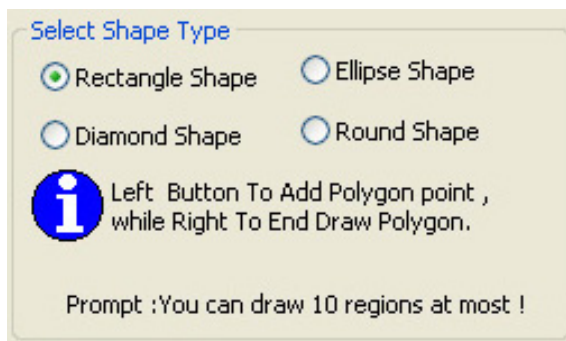
1. From the Main Setting section, select **User Defined** of the Detect Region group.



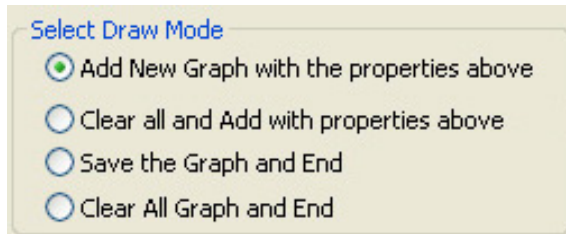
2. Click **Set detect region** from the VideoSecurity main menu to display Shape Properties dialog box.
3. Click the option buttons to select the region type.



4. Click option buttons to select shape type.



5. Click option buttons to select the draw mode.

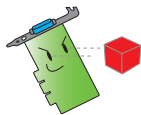


6. Click **OK** to apply settings.

- Click and drag the mouse on an area to set detect region.



Detect region

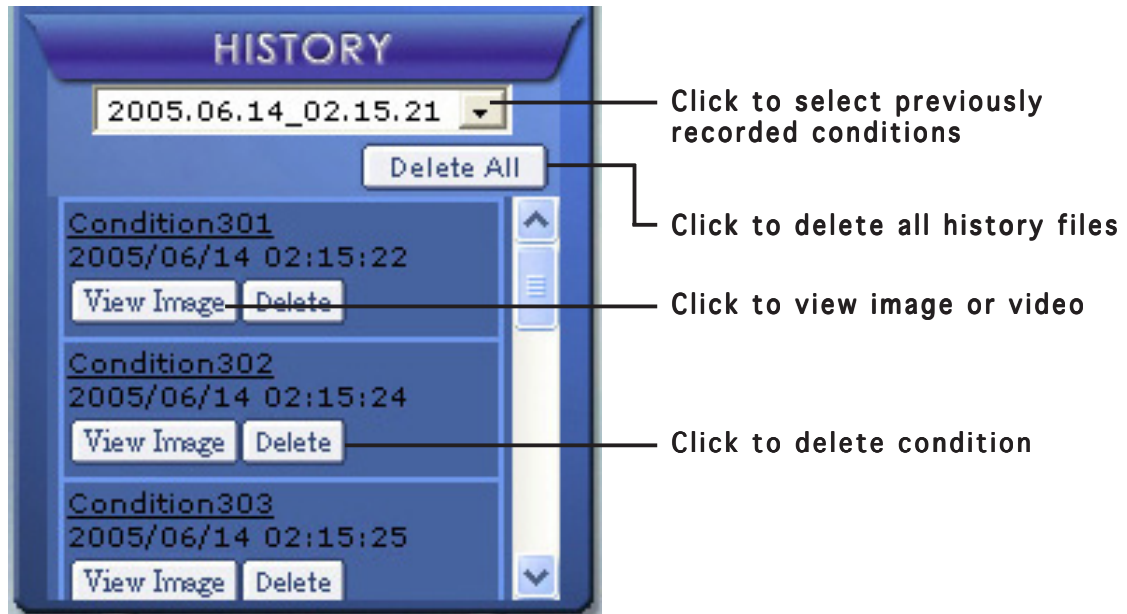


You can set up to a maximum of ten (10) detect regions.

- Click  to begin surveillance.

History

Contains the list of recorded conditions in the detect region. The following labels the history section from the main menu.



1. To select other recorded conditions, click the list box labeled with the date and time of recording.



2. To delete a recorded condition stored in another folder, select the folder from the list box and click **Delete All**.
3. To preview image or video, click **View Image** from a listed condition.
4. To delete a recorded condition, click **Delete**.

